



## 2015 C2E Grant Application

Name: Iylea Olson and Mead Mier

Address: 628 E Mabel Street City: Tucson State: AZ Zip: 85705

Phone: 520-834-6932 Email: desertlivingtucson@gmail.com

### **Project Information**

Project Title: Feldman's Neighborhood Green Infrastructure Enhancement

Project Location: First Ave between Lee St and Helen St

Site Ownership (list landowners affected by the proposed project and include signed letter(s) of support from property owners):

Ellen McMahon

Paula and Ron Fuller

Erika Kreider

Martin Munro

Cassidy Crane

St. Luke's Home - Marlene Dermody

With additional smaller micro-basin support (no appropriate for curb cuts and trees) completed with donated materials next to the houses of C.J Jones, Diana Lett, Ritamarie Lesauski, and Annette + Paul Felix.

***For all questions, see C2E Grant Info Packet for more details and explanation!***



## **Section 1: Project Description**

### **1. What is the value of the proposed project at this particular site? What makes this site a priority for funding? (Word limit = 300)**

Feldman's Neighborhood is interested in reintroducing elements of the habitat that was once associated with our neighborhood washes (now flowing in a braided path through paved streets; Drachman St, Mabel St, and Helen St). Our project is a priority for funding because of the opportunity for high visibility, to reduce concerning flood flows, and to restore natural and cultural heritage. Thank you for offering this unique platform to grow watershed education, community connections and a sense of place between our long term home owners and large student population. Our long-term goal is to make implementation, stewardship and care contagious among the rental properties and encroaching mini-dorms by leading by example and supporting great students like the UA Hydrocats who will soon become green leaders of tomorrow. We will tie Trees for Tucson plantings to necessary rainwater harvesting practices to make the canopy resilient without long term irrigation.

We propose to accomplish street-wash restoration through a series of green infrastructure improvements along those corridors as well as along streets that serve as connections between the three water courses. In our long-term vision, we aspire to reduce the impervious area of the neighborhood watershed with chicanes or traffic circles where the streets are overly wide. For the first phase of the project, we would like C2E to consider funding a series of water harvesting basins with curb cuts and native plants along First Ave, between Lee St and Helen St. This is a popular walking corridor for the neighborhood, so projects and educational signage will have high visibility, helping to bolster support for future phases.

To help achieve educational goals, we'd like to create a modest art project by painting the streets to demonstrate the concept of street washes and green streets. This would involve a community effort to implements and when complete, it will be highly visible to neighbors and passersby. We'd like to use street paint to create an artistic line representing a ghost wash. This would follow the historic path of the wash (based on our review of historic documents), and will further help to educate that the nature benefits of washes can still be realized if we allow the streetscape to embody these attributes. We'd like to modify the traditional C2E signage to be artistic while educational, representing the connection to the larger watershed with directional arrows to the nearest washes and river and could even symbolically explain the additional value of green infrastructure for bike and pedestrian safety (*please see attachment for signage mock-up*).



## 2015 C2E Grant Application



San Francisco Ghost Arroyo Concept



Feld David Pocket Park, Tucson



**Above:** Watershed map to incorporate into our C2E signage.

**Below:** Example Storm Flow Art in Philadelphia.

### 2. How will the waterway and the adjacent riparian area be improved? (Word limit = 300)

An overall neighborhood goal is to increase the number of basins in the right-of-ways along our street washes to support xeroriparian vegetation and recreate the habitat and flood attenuation benefits of a natural wash, reducing the “grey infrastructure” impacts on our neighborhood ecosystem. The proposed basins will take advantage of street runoff using curb cuts.



The green infrastructure will help mitigate flooding on Drachman, Mabel, and Helen by directing street runoff toward planted areas. The street runoff will help support a palette of native plants that offer a variety of benefits for human and wildlife residents of the neighborhood, including water filtration, food, shelter, shade, and aesthetic appeal. We've selected plants that are known to do well in xeri-riparian conditions, creating educational opportunities about wash ecosystems.

We estimate that each of our proposed 20-foot long basins has the capacity to hold 860 gallons of water. With a series of 13 or more basins across four neighborhood blocks we could capture over 11,000 gallons of runoff.

**3. Is the project site physically connected to a designated Pima County urban wash or riparian area? Describe the connection and potential impact of the site to the surrounding area. (Word limit = 300)**

Helen Street is the neighborhood's official street wash. Our natural wash is no longer present except for in the form of grey infrastructure flood conveyance through the streets. Flow in our local Bronx watershed begins closer to UMC, increases as it flows west on Drachman, Mabel, and Helen from Park to Stone Ave. It eventually joins Bronx Wash outside our neighborhood, just before entering the Santa Cruz River.

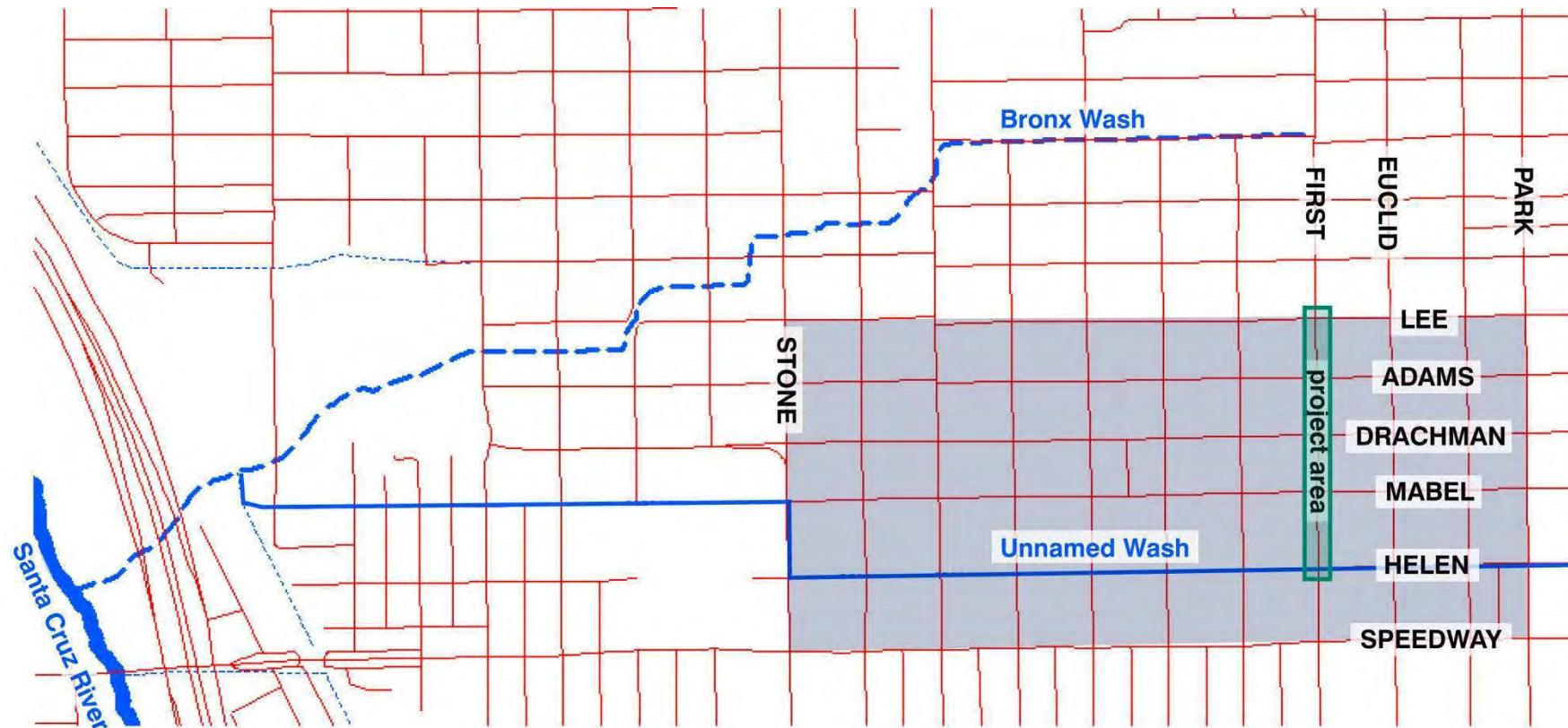
Feldman's is a neighborhood rich with history. We are interested in providing our unnamed wash with a designated name through the official State process, which requires a historical review. Feldman's is within a historic district with many active, long-time residents so it is very much in our interest to recognize the wash's historic name or to name it after a historical element on its route. We have a strong connection to understanding the flow patterns in the neighborhood, including observations of flooding up over the curb/banks and where the streets truly act as washes. The neighbors have many stories going back generations (*please see attachment with photos of high flows on cross streets to 1st Ave*).

Mabel Street  
Flood of 2006

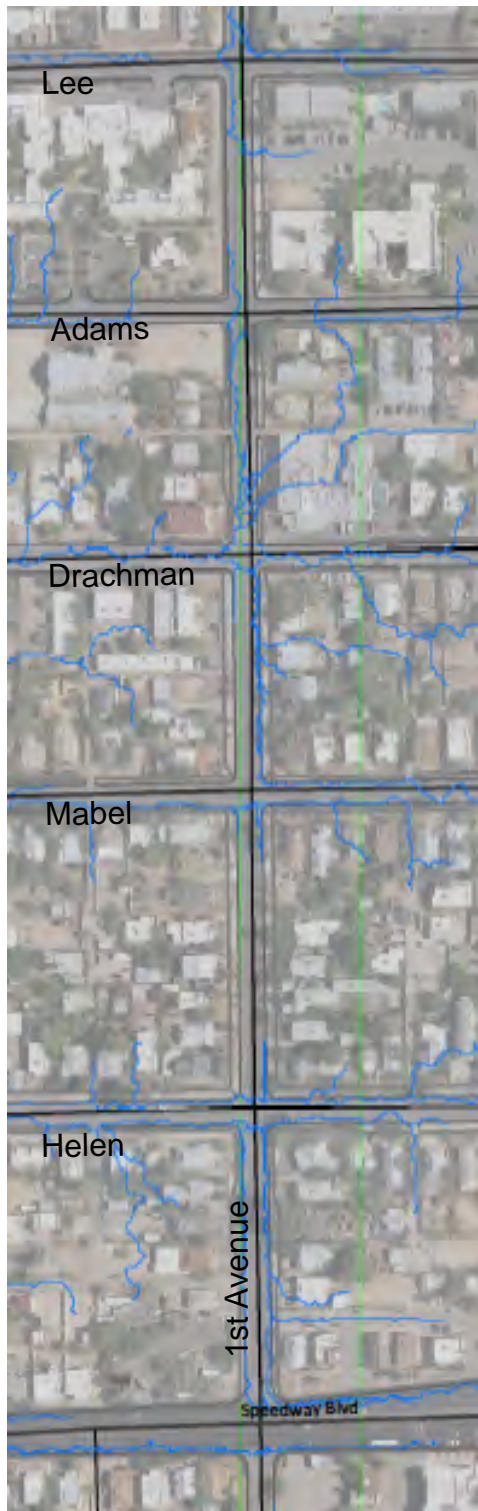




Feldman's Neighborhood Watershed

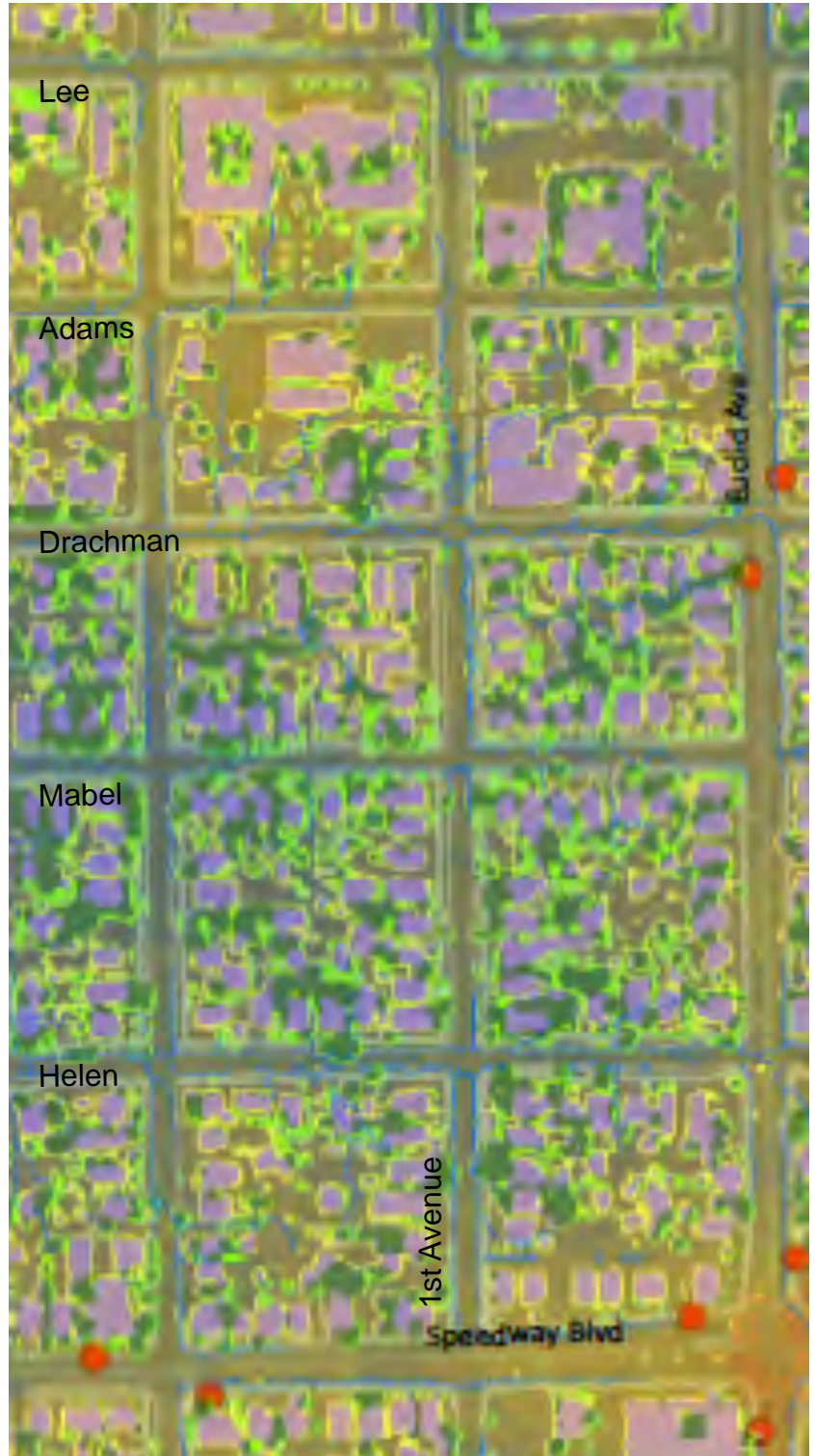


## ***From PAG Green Infrastructure Map***



### **Flow Lines**

shows which side of street flow is on  
for planning purposes



### **Heat and Canopy Cover**



**4. Tucson C2E is working to improve Tucson's quality of life, enhance ecosystems and increase biodiversity. What actions or outcomes do you anticipate this project will have on the surrounding ecosystem in support of the overall C2E program goals? (Mark all that apply.)**

- ☒ Adding new native habitat      *(specifically focused on xeroriparian)*
- ☒ Controlling erosion
- ☒ Controlling stormwater runoff
- ☒ Decreasing energy bills      *(with simultaneous residential shade tree campaign, building on C2E momentum)*
- ☒ Enhancing existing habitat
- ☒ Enhancing neighborhood aesthetics
- ☒ Growing food      *(with native plants)*
- ☒ Improving soil conservation
- ☒ Improving walkability      *(high need on 1st Ave)*
- ☒ Shade cover
- ☒ Increasing soil moisture
- ☒ Mitigating urban heat island effects      *(high need in area to north)*
- ☒ Reducing sewer & septic inputs      *(no combined sewers in Tucson, although some residents, such as Erika, will use grey water for their new residential trees, especially fruit trees)*
- ☐ Other:

Comments:



**Section 2: Water Resources**

**5. Describe water conservation practices that will be implemented during the construction of the project and after the work is complete. If supplemental water is needed for the project, what type(s) of water will be used, where will it come from and how will it be delivered? (Word limit = 400)**

Each of our basins will be connected to street water flow via curb cuts, reducing the need for supplemental irrigation.

The plant palette consists of native, low-water-use plants that will not require a permanent irrigation system. Plants will temporarily be hand watered during a 1-2 year establishment period. Some of our residents have cisterns that may be used for supplemental hand watering. We intend to include an educational workshop component with our project implementation. Part of this educational opportunity will include information on proper watering techniques and schedules to phase out potable water use after tree establishment. Our neighborhood promoted the Trees for Tucson guidance as well as Watershed Management Group's Rain Garden Care Manual with our previous tree planting projects. *(Please see attachment with plant selection.)*

We would like to use DRiWATER for additional establishment support for trees and are interested in purchasing a one-year supply for each tree we plant as a part of this grant project. This is a product in use by both the City and the County on similar projects. More information about the product can be found here: <http://driwater.com/what-is-driwater/>



**Section 3: Community Investment**

**6. Describe the organizational support for this project. Include a bulleted list of individuals and organizations with each partner's role and contribution to the project identified (e.g. matching funds, project design, volunteer hours, etc.). (Word limit = 300)**

- Feldman's Neighborhood - Project management; site design; providing tools, mulch, extra rocks, donations for trees sent to TFT; volunteers during workshop
- Desert Living, Inc., lylea Olson, MLA – Feldman's resident, Site design, Installation Coordination, Long-term maintenance coordination (experience as WMG Monsoon Squad Leader at rain garden site)
- Residents adjacent to each project site - Providing long-term maintenance, volunteers during workshop
- Trees for Tucson, Katie Gannon - Value of 20 trees, Coordination with Feldman's for planning
- Girl Scouts, Eve Connick (troop leader) - Tree planting volunteers
- Girl Scouts, Stacey Cohen (troop leader) - Tree planting volunteers
- University of Arizona Hydro Cats, Dylan H. (leader) - Rainwater harvesting volunteers
- Ethos Rainwater Harvesting, Lincoln Perino - Workshop instruction, Installation coordination
- Darci and Davidson – Feldman's residents, Educational artistic signage and painting
- Tucson Clean and Beautiful - Street Maintenance Reporting System (Mead Mier reporter to Jean Hickman)
- Job Corps, Gilbert Rico – Volunteers for earthworks and planting

**C2E participants in Feldman's:**

Mead Mier  
Sarah Harris  
Ellen McMahon  
Francesca Imig  
Sue Sanders  
Nancy Biel  
Julie Armin  
lylea Olson



**7. Create an outreach plan for the project that includes volunteer needs, C2E recruitment and project promotion. (Word limit = 300)**

Volunteer needs and matching funds are already committed (See Question 6). For our recent 2014-2015 “50 for Feldman’s” tree campaign along 4<sup>th</sup> Ave, we engaged residents, forming a Green Team of over a dozen super committed neighbors. We were able to recruit monetary donations from local businesses and political leaders to fund the project. In the end, we had over 30 volunteers from the neighborhood and outside groups to help with the tree planting effort.

We get the word out about projects through our active email listserv and our Facebook page. When Cyclovia ran through our neighborhood this Fall we engaged more people for our tree campaign and gathered funds for through donations given to the bands we had play, who then offered to donate it to our green projects. When Cyclovia comes through our neighborhood in Fall 2015, we will have an opportunity to spread the word, collect input on the project, and gather more volunteers.

We conducted walkability assessments with Living Streets Alliance this spring to see where we can address important traffic calming and shade issues. We identified 1st Ave as a priority. Many neighbors came out to support the LSA events and expressed continued interest. The green infrastructure will also promote calmer traffic on this road, which was once an arterial but became a neighborhood street; thus it is unnecessarily wide with fast traffic and would benefit from a safer passage for neighbors on foot and create more of an atmosphere that encourages people to linger, notice and enjoy the new amenities.

The neighborhood has exhibited engagement in rainwater harvesting and green infrastructure in many ways. We adopted the rain harvesting Traffic Circle at 4th and Helen by maintaining vegetation, planting wildflower seeds, and cleaning trash. Many neighbors have independently installed rainwater harvesting features in their right-of-ways and properties.

In the past, Feldman’s Neighborhood Association (FNA) used funding from a PRO Neighborhoods Grant to install cisterns and a retention basin to divert flood waters from Mabel Street. Collaborating with PRO Neighborhoods, we offered instructional tours, training people from



as far away as South Korea. FNA conducted training workshops from 1999 to 2005. PRO was proud of our performance and used our project as a case study.

The project will promote the concept of C2E's value after project implementation with signs that will go on the trees in basins so that as people walking by notice the new features, they will know the background (*please see example tree signs in attachment*).

**8. What is the plan for maintaining the site after C2E funding has ended (who, what, when, and how)? If adding plant material, how long do you plan to use supplemental water? (Word limit = 300)**

Our rain garden sites were partially selected based on the adjacent neighbor's eagerness to participate and willingness to continue care. Each project site has an associated resident who has committed to the following stewardship:

- Clearing curb cuts of debris
- Clearing basin sediment traps
- Weeding
- Regular supplemental watering of plants for a one- to two-year establishment period
- Intermittent supplemental watering based on seasonal conditions after establishment period (See question 5 for more detailed information on plant establishment.)

In addition, the sponsoring residents will have the full support of the neighborhood for ongoing maintenance. FNA is already engaged in a number of neighborhood maintenance programs and educational opportunities that can be extended to these project sites. We participate in the Tucson Clean and Beautiful Adopt-a-Road maintenance reporting system to report our month trash clean ups, tree trimming, weed pulling, etc. Residents also participated in a tree pruning workshop in the neighborhood in April 2015 with Tucson Botanical Gardens.

We plan to offer our sponsoring residents a copy of the WMG Rain Garden Care Guide and links to Trees for Tucson tree care information. Our neighborhood plans to create a simple care guide to hand out for easy reference.



## 2015 C2E Grant Application

Our Green Team consists of the following neighbors who are committed to the organization of and participation in neighborhood projects:

- Sarah (FNA President, ROW currently demonstrates great habitat and harvesting, very active in all events)
- Dianna (FNA Co-president, historic preservation activist)
- Mead (FNA VP, Certified Rainwater Harvesting Practitioner with WMG, Conducts outreach and watershed planning by profession)
- Iylea (Landscape Designer, WMG Monsoon Squad Leader @ Ward 1)
- Scout (works for TFT, Feldman's neighbor)
- Dylan (UA Hydrocats founder, Feldman's neighbor)
- Sue (Blue Stake experienced volunteer, snack coordinator)
- Julie (helps with door to door recruitment with her adorable daughter)
- Joanne
- Mary
- Francesca (installed irrigation to ROW from her cistern)
- Emma (adopted several trees on 4th ave, neighborhood enthusiast)
- Davidson (metal sculptor, help with past tree planting and harvesting efforts on 5th ave)
- Darci (donated river rocks and lot to store mulch, artist, landscape architect)
- Erika (participates in tree pruning workshops and preparatory needs)
- Lisa (lends tools and support)
- Annette (helps with outreach at Cyclovia and other support)



Dylan and the Hydrocats



Sue, neighborhood organizer



Sarah, FNA President



Iylea, Lanscape Architect



Erika, tree enthusiast



Mead, Project Coordinator



Katie, Trees for Tucson and Girl Scouts



#### **Section 4: Project Site Map and Design Diagram**

**9. The site map and/or design diagram can be submitted as one or more graphics.** These graphics can be hand drawn or created with computer software (*see previous application examples*). We strongly recommend you seek professional consultation with an earthworks or similar company to help with this process and ensure your design best fits your project site. This map/design must include:

- Identification of the major crossroads and project boundaries (including property ownership)
- Proximity to adjacent wash(es) and/or riparian area(s), including distance (information can be found at: <http://maps.tucsonaz.gov/stormwater/> or <http://gis.pima.gov/maps/mapguide/>)
- Site accessibility information (public access points and project visibility)
- Site plan design diagram that clearly identifies primary proposed features (e.g. vegetation, earthworks, curb cuts, etc.)



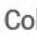
*Please see attachments of our site maps, example photos, details and designs.*

# Feldman's C2E Map

## C2E Interested Houses

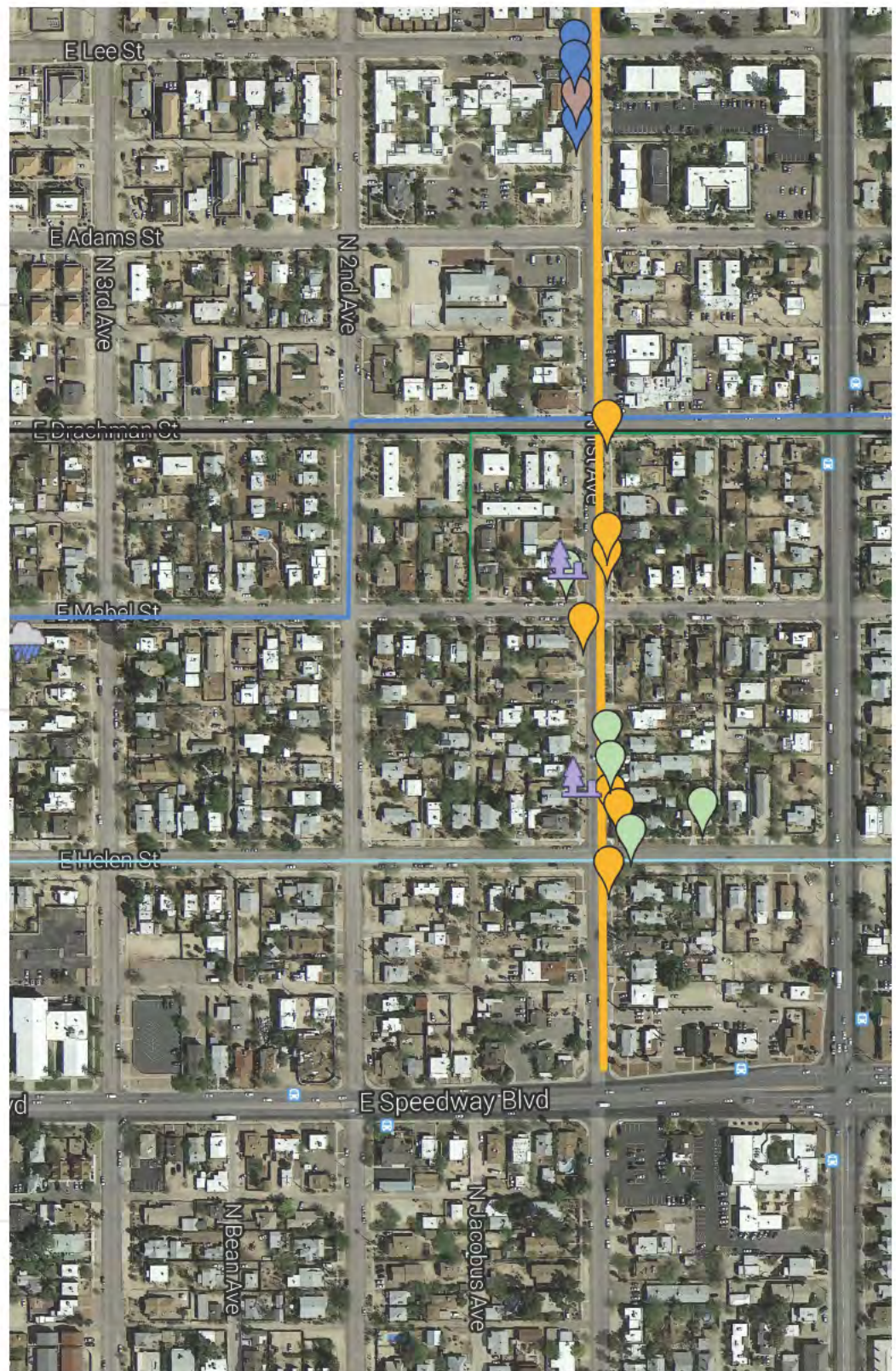
-  cut and basin
-  basin
-  shallow swales
-  C2E sign
-  Little free library

## Flows and Roads

-  Official UnNamed Wash
-  Major Flow
-  Bike Boulevard
-  Walking Blvd -Wide Nbrhood Collector
-  Future Bike Boulevard
-  major flooding

## Rainwater Harvesting History

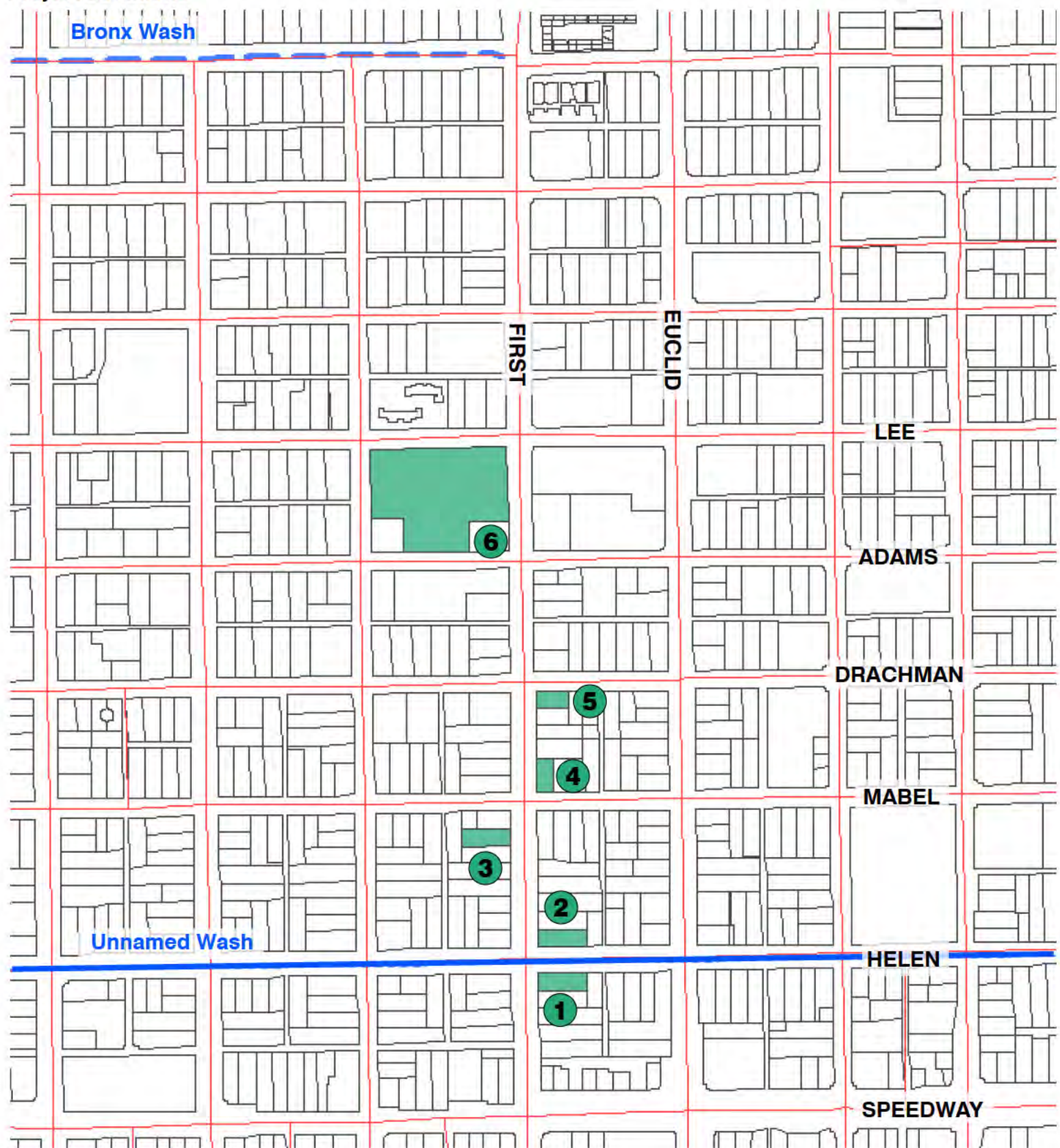
-  has basins, berms and veg,  
wants curb cut,
-  has berms and veg
-  1990's Rainwater Harvesting Grant
-  Bump-outs
-  Rainwater harvesting
-  FNA AdptdTraffic Circle, (TCB)



data ©2015 Google, Imagery ©2015 DigitalGlobe, U.S. Geological Survey, USDA Farm Service Agency

Greening the Streets for Watershed Restoration

## Project Locations



### Property Info + Wash Proximity

- 1** Ellen McMahon, 1144 N First Ave, directly adjacent to "Helen" Wash, 0.5 miles from Bronx Wash
- 2** Paula + Ron Fuller, 1203 N First Ave, directly adjacent to "Helen" Wash, 0.5 miles from Bronx Wash
- 3** Erika Kreider, 1239 N First Ave, 0.07 miles from "Helen" Wash, 0.45 miles from Bronx Wash
- 4** Martin Munro, 701 E Mabel St, 0.1 miles from "Helen" Wash, 0.4 miles from Bronx Wash
- 5** Cassidy Crane, 1340 N First Ave, 0.15 miles from "Helen" Wash, 0.35 miles from Bronx Wash
- 6** St. Luke's Home, 615 E Adams St, 0.25 miles from "Helen" Wash, 0.25 miles from Bronx Wash

You can view these project locations on our google map as well as locations of recent and future projects.

[https://drive.google.com/open?id=1eYNY4UL\\_-fonISwx3Ambw5b1bM&authuser=0](https://drive.google.com/open?id=1eYNY4UL_-fonISwx3Ambw5b1bM&authuser=0)

Feldman's Neighborhood Green Infrastructure Enhancement

McMahon Residence  
1144 N First Ave Tucson, AZ 85705

Revisions	No.	Date
-----------	-----	------

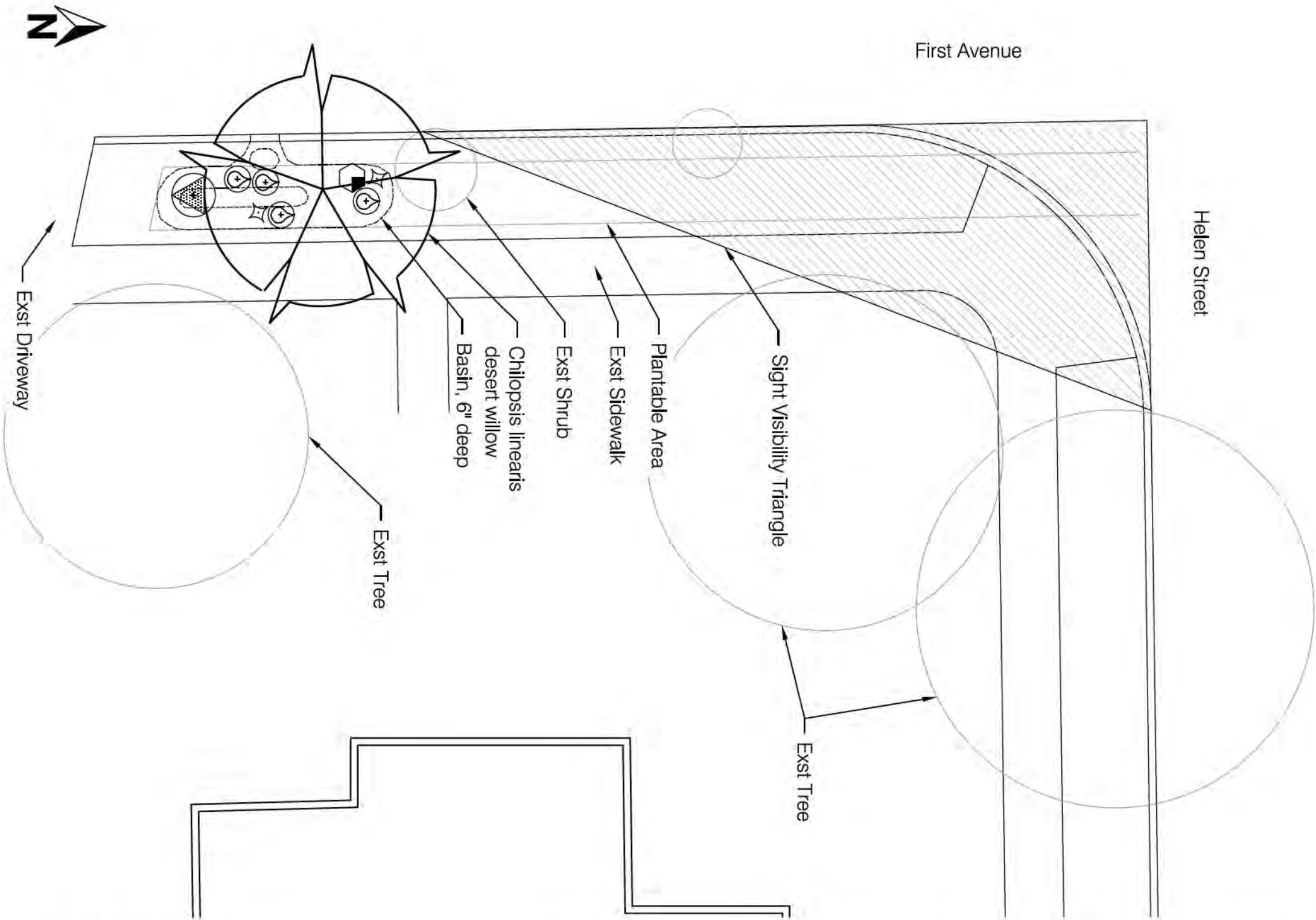
THIS DRAWING IS A CONCEPTUAL DESIGN AND IS NOT TO BE USED FOR CONSTRUCTION PURPOSES. DRAWINGS ARE COPY WRITTEN BY DESERT LIVING, INC. ANY REPRODUCTION OR REUSE WITHOUT WRITTEN PERMISSION IS STRICTLY FORBIDDEN ©

Project No.	
Drawn By	Iylea Olson, MLA
Checked By	



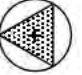

Scale  
1/8" = 1' on 11"x17"

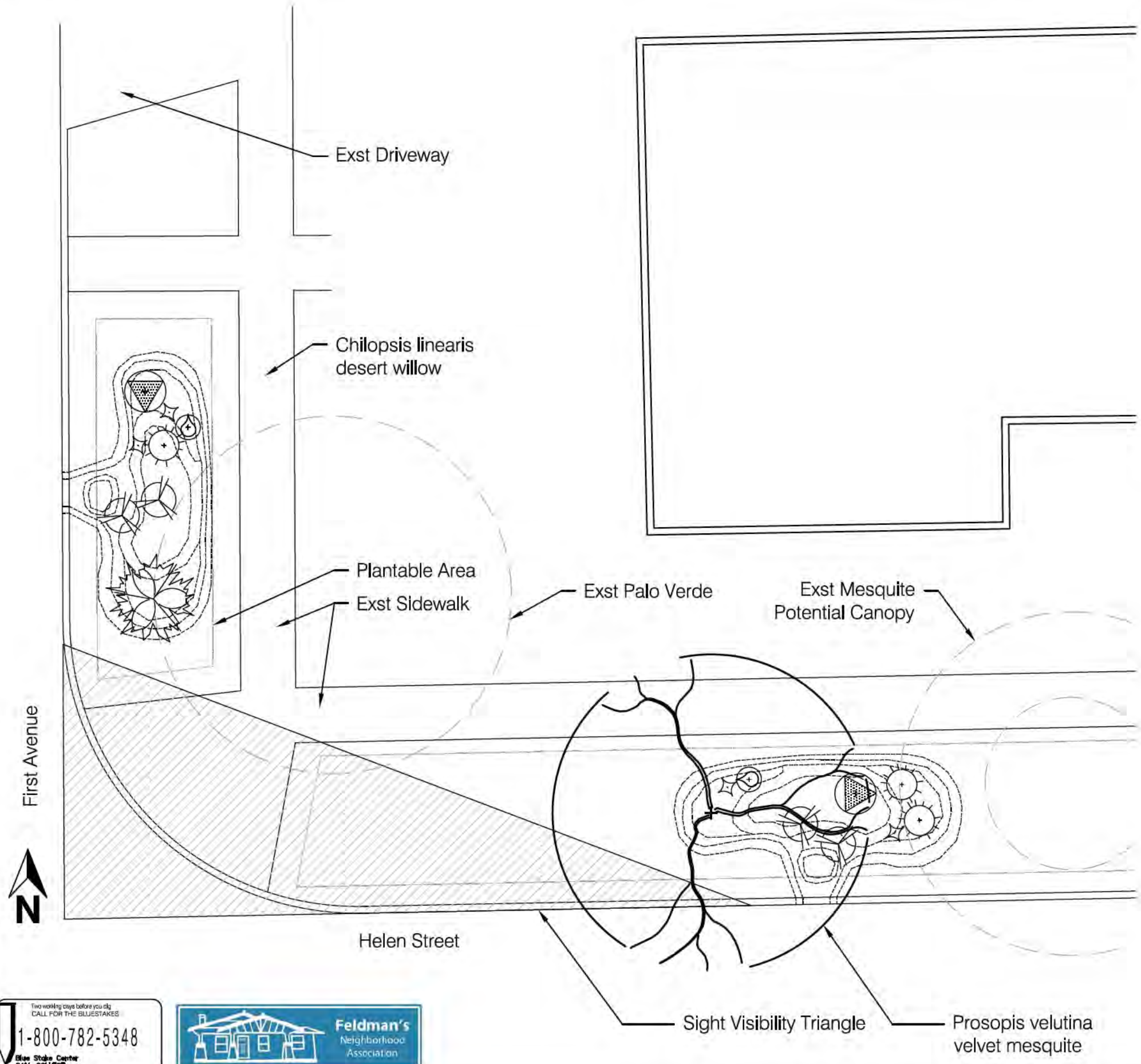
Sheet

L01



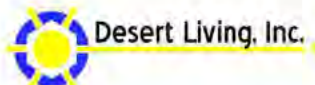
PLANT LEGEND

SYMBOL	BOTANICAL NAME COMMON NAME
	<i>Asclepias subulata</i> desert milkweed
	<i>Baileya multiradiata</i> desert marigold
	<i>Dalea bicolor</i> v. <i>orcuttiana</i> blue dalea
	<i>Glandularia goodingii</i> mock vervain



PLANT LEGEND

SYMBOL	BOTANICAL NAME COMMON NAME
	Asclepias subulata desert milkweed
	Baileya multiradiata desert marigold
	Calliandra eriophylla pink fairyduster
	Dalea bicolor v. orcuttiana blue dalea
	Glandularia goodingii mock vervain
	Lycium exsertum wolfberry
	Muhlenbergia rigens deergrass



628 East Mabel Street  
Tucson, AZ 85705  
[PHONE] 520-834-6932  
[WEB] www.desertlivingtucson.com

Feldman's Neighborhood Green  
Infrastructure Enhancement  
**Fuller Residence**  
1203 N First Ave  
Tucson, AZ 85705

Revisions	
No.	Date

THIS DRAWING IS A CONCEPTUAL DESIGN AND IS NOT TO BE USED FOR CONSTRUCTION PURPOSES.  
DRAWINGS ARE COPY WRITTEN BY DESERT LIVING, INC. ANY REPRODUCTION OR REUSE WITHOUT WRITTEN PERMISSION IS STRICTLY FORBIDDEN ©

Project No.  
Drawn By     Iylea Olson, MLA  
Checked By

Scale  
1/8"=1' on 11"x17"

Sheet  
**L02**

Two working days before you dig  
CALL FOR THE BLUESTAKES  
**1-800-782-5348**  
Blue Stakes Center  
CALL COLLECT

**Feldman's**  
Neighborhood  
Association



Existing Mesquite

*Chilopsis linearis*  
desert willow

Plantable Area

Exst Sidewalk

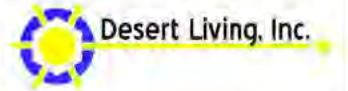
Exst Desert Willow  
Potential Size

Exst Driveway

First Avenue

## PLANT LEGEND

SYMBOL	BOTANICAL NAME COMMON NAME
	<i>Aloesia wrightii</i> oreganillo
	<i>Asclepias subulata</i> desert milkweed
	<i>Baileya multiradiata</i> desert marigold
	<i>Calliandra eriophylla</i> pink fairyduster
	<i>Dalea bicolor v. orcuttiana</i> blue dalea
	<i>Glandularia goodingii</i> mock vervain



628 East Mabel Street  
Tucson, AZ 85705

[PHONE] 520-834-6932  
[WEB] [www.desertlivingtucson.com](http://www.desertlivingtucson.com)

Feldman's Neighborhood Green  
Infrastructure Enhancement  
**Kreider Residence**  
1239 N First Ave  
Tucson, AZ 85705

## Revisions

No. Date

THIS DRAWING IS A CONCEPTUAL DESIGN AND IS  
NOT TO BE USED FOR CONSTRUCTION PURPOSES.

DRAWINGS ARE COPY WRITTEN BY DESERT  
LIVING, INC. ANY REPRODUCTION OR REUSE  
WITHOUT WRITTEN PERMISSION IS STRICTLY  
FORBIDDEN ©

Project No.

Drawn By **Iylea Olson, MLA**

Checked By

Scale

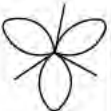



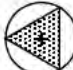


3/16" = 1' on 11"x17"

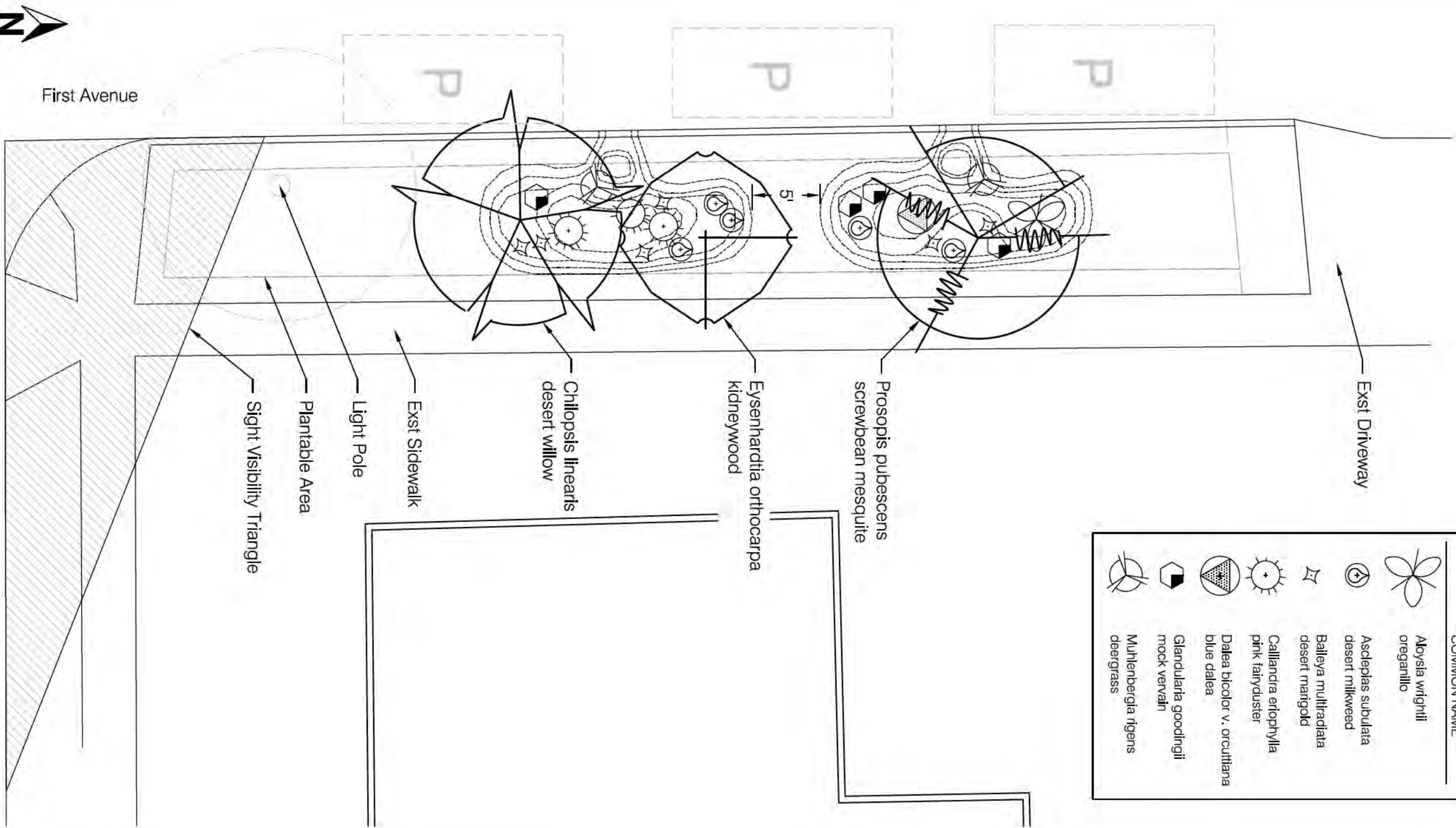
Sheet

**L03**



PLANT LEGEND

SYMBOL	BOTANICAL NAME COMMON NAME
	<i>Aloysia wrightii</i> oreganillo
	<i>Asclepias subulata</i> desert milkweed
	<i>Baileya multiradiata</i> desert marigold
	<i>Calliandra eriophylla</i> pink fairyduster
	<i>Dalea bicolor</i> v. <i>orcuttiana</i> blue dalea
	<i>Glandularia goodingii</i> mock vervain
	<i>Muhlenbergia rigens</i> deergrass



628 East Mabel Street  
Tucson, AZ 85705  
[PHONE] 520-834-6932  
[WEB] [www.desertlivingtucson.com](http://www.desertlivingtucson.com)

Feldman's Neighborhood Green Infrastructure Enhancement

Munro Residence  
701 E Mabel St  
Tucson, AZ 85705

Revisions

No. Date

THIS DRAWING IS A CONCEPTUAL DESIGN AND IS NOT TO BE USED FOR CONSTRUCTION PURPOSES. DRAWINGS ARE COPY WRITTEN BY DESERT LIVING, INC. ANY REPRODUCTION OR REUSE WITHOUT WRITTEN PERMISSION IS STRICTLY FORBIDDEN ©

Project No.

Drawn By Iylea Olson, MLA

Checked By

Scale 1/8" = 1' on 11"x17"

Sheet

L04

For working scale please go to:  
CALL FOR THE BLUEPRINTS  
1-800-782-5348  
Blue Studio Center  
CALL COLLECT



Feldman's Neighborhood Green Infrastructure Enhancement

**Crane Residence**  
1340 N First Ave  
Tucson, AZ 85705

THIS DRAWING IS A CONCEPTUAL DESIGN AND IS NOT TO BE USED FOR CONSTRUCTION PURPOSES. DRAWINGS ARE COPY WRITTEN BY DESERT LIVING, INC. ANY REPRODUCTION OR REUSE WITHOUT WRITTEN PERMISSION IS STRICTLY FORBIDDEN ©

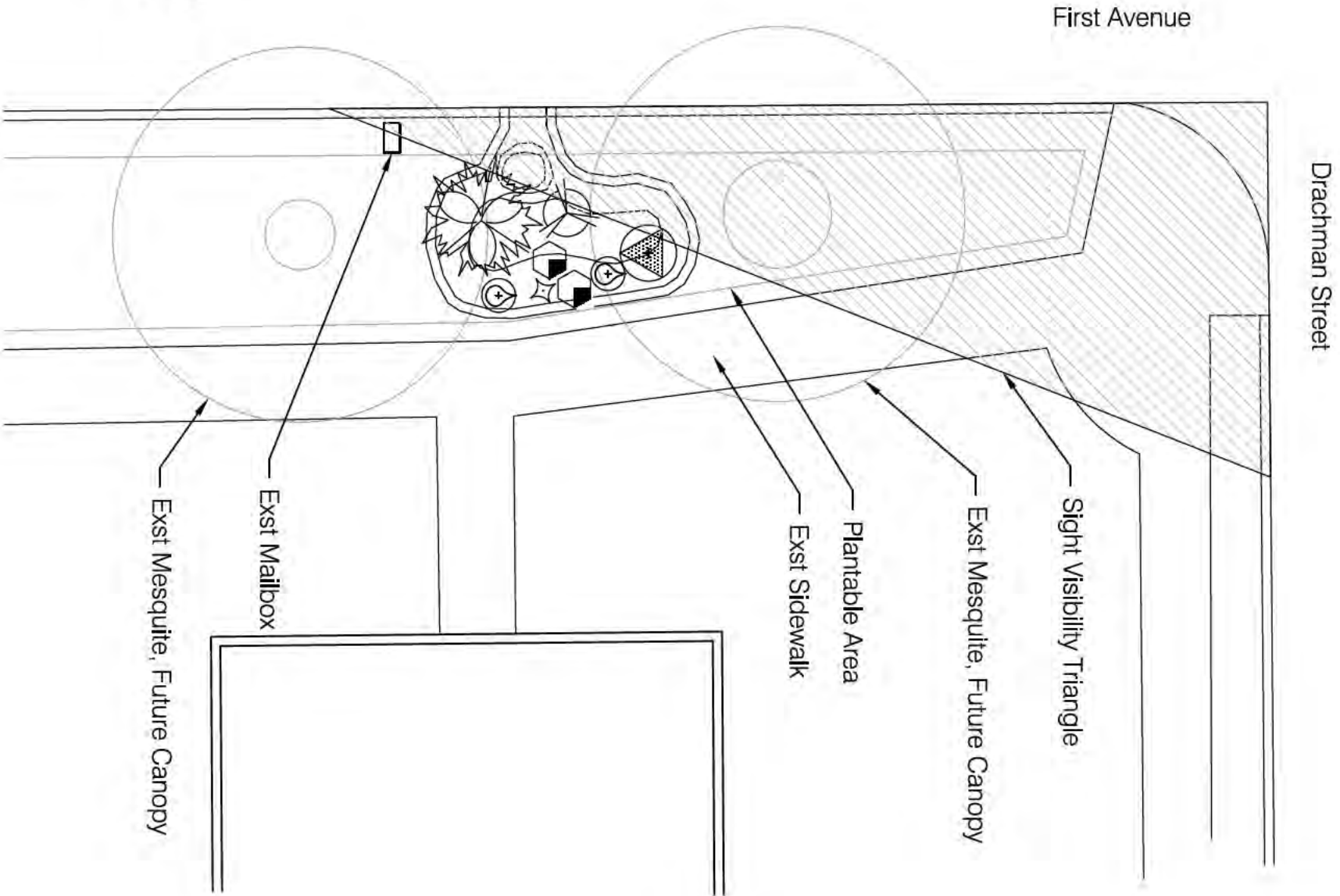
Revisions  
No.      Date

Project No.  
Drawn By      Iylea Olson, MLA  
Checked By



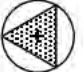

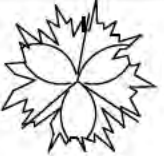
Scale  
1/8" = 1' on 11"x17"

Sheet

L05



PLANT LEGEND

SYMBOL	BOTANICAL NAME COMMON NAME
	<i>Asclepias subulata</i> desert milkweed
	<i>Baileya multiradiata</i> desert marigold
	<i>Dalea bicolor</i> v. <i>orcuttiana</i> blue dalea
	<i>Glandularia goodingii</i> mock vervain
	<i>Lycium exsertum</i> wolfberry

Lee Street

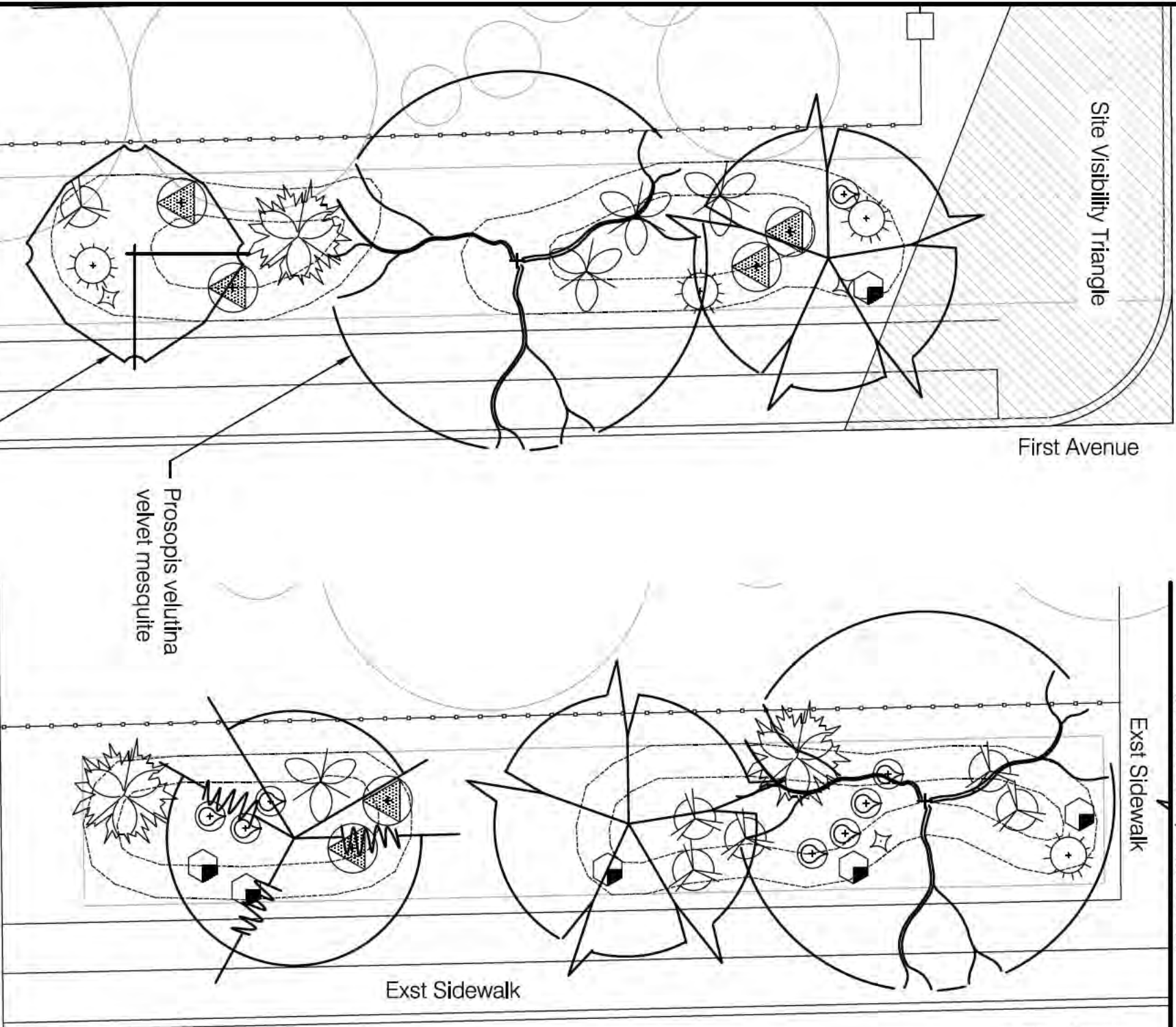
Site Visibility Triangle

First Avenue

MATCH LINE, THIS SHEET

Exst Sidewalk

First Avenue



Exst Sidewalk

Eysenhardtia orthocarpa  
kidneywood

Prosopis pubescens  
screwbean mesquite

Plantable Area

Chilopsis linearis  
desert willow

PLANT LEGEND

SYMBOL	BOTANICAL NAME COMMON NAME
	Aloysia wrightii oreganillo
	Asclepias subulata desert milkweed
	Baileya multiradiata desert marigold
	Calliandra eriophylla pink fairyduster
	Dalea bicolor v. orcuttiana blue dalea
	Glandularia goodingii mock vervain
	Lycium exsertum wolfberry
	Muhlenbergia rigens deergrass

MATCH LINE, THIS SHEET

Two working days before you dig  
CALL FOR THE BLUEPRINTS  
1-800-782-5348  
San Diego Center  
CALL COLLECT



628 East Mabel Street  
Tucson, AZ 85705  
[PHONE] 520-834-6932  
[WEB] www.desertlivingtucson.com

Feldman's Neighborhood Green Infrastructure Enhancement

St. Luke's Home  
615 E Adams St  
Tucson, AZ 85705

Revisions

No. Date

THIS DRAWING IS A CONCEPTUAL DESIGN AND IS  
NOT TO BE USED FOR CONSTRUCTION PURPOSES.  
DRAWINGS ARE COPY WRITTEN BY DESERT  
LIVING, INC. ANY REPRODUCTION OR REUSE  
WITHOUT WRITTEN PERMISSION IS STRICTLY  
FORBIDDEN ©

Project No.

Drawn By Iylea Olson, MLA

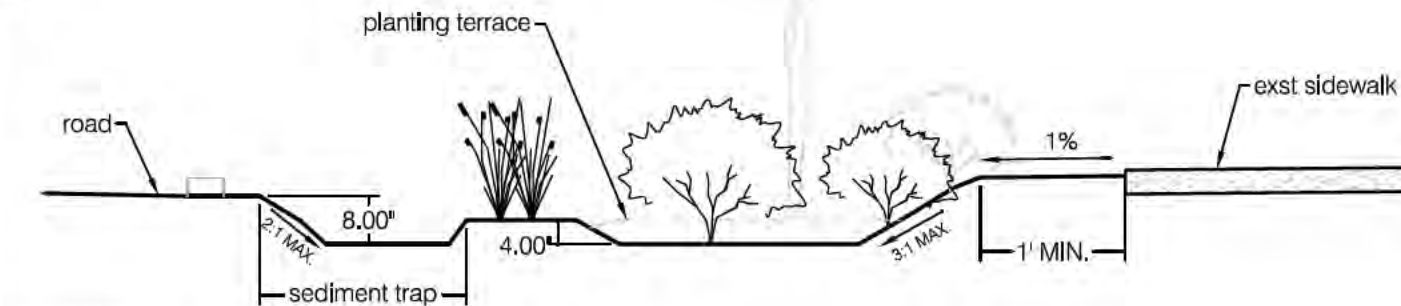
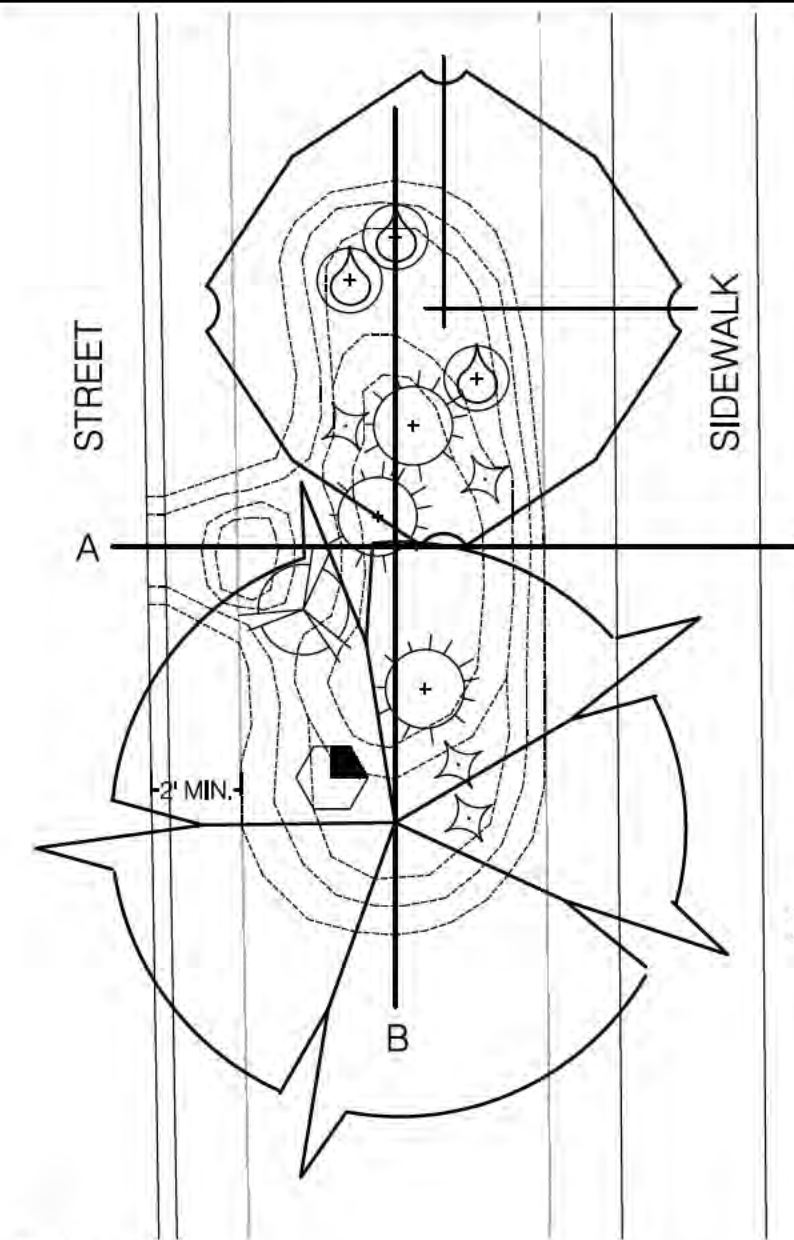
Checked By

Scale

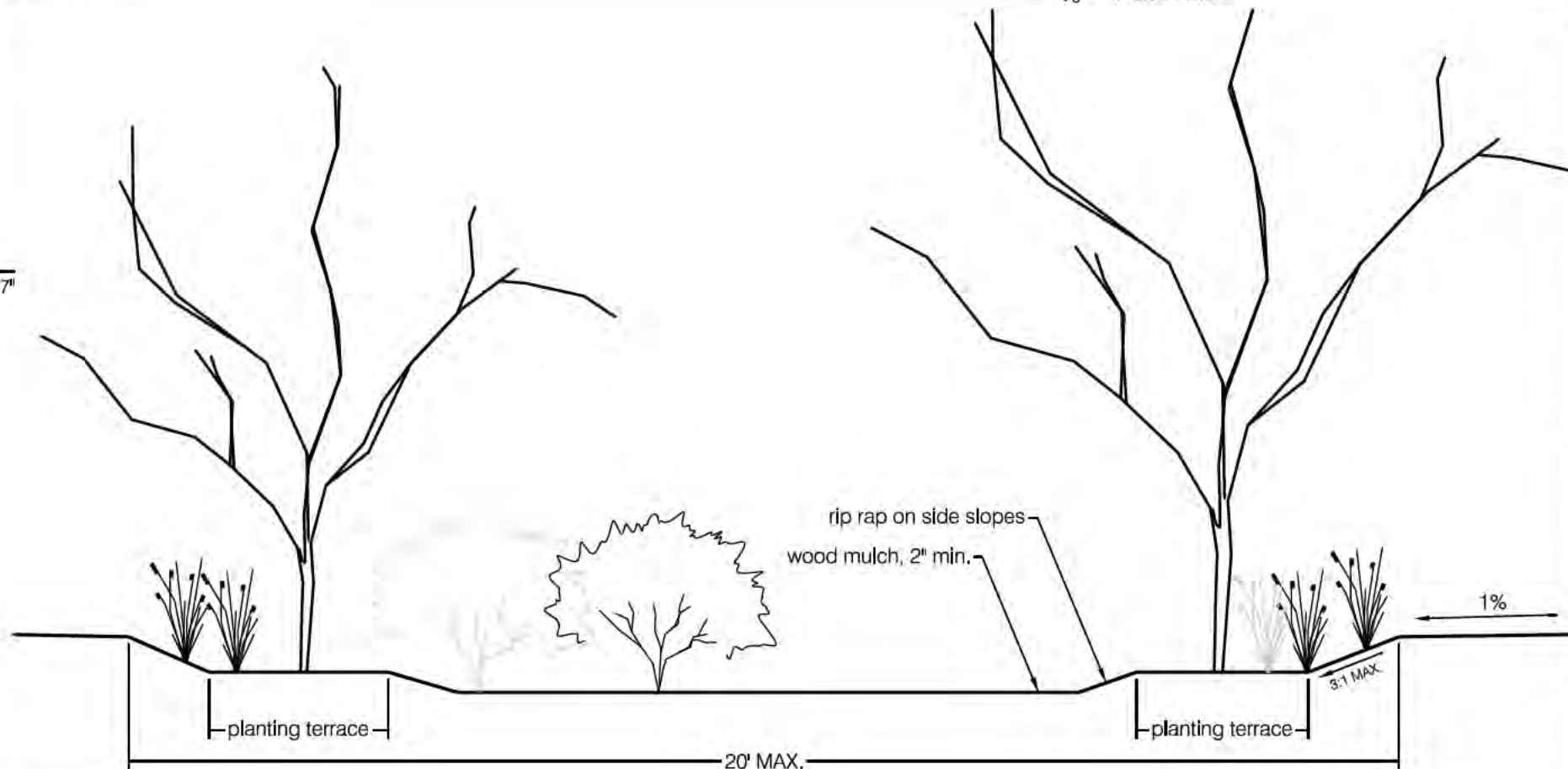
1/8" = 1' on 11"x17"

Sheet

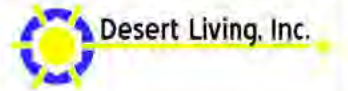
L06



$\frac{3}{8}'' = 1'$  on 11"x17"



$\frac{3}{8}'' = 1'$  on 11"x17"



628 East Mabel Street  
Tucson, AZ 85705

[PHONE] 520-834-6932  
[WEB] www.desertlivingtucson.com

Feldman's Neighborhood Green  
Infrastructure Enhancement  
Basin Details

Revisions

No.	Date

THIS DRAWING IS A CONCEPTUAL DESIGN AND IS NOT TO BE USED FOR CONSTRUCTION PURPOSES.

DRAWINGS ARE COPY WRITTEN BY DESERT LIVING, INC. ANY REPRODUCTION OR REUSE WITHOUT WRITTEN PERMISSION IS STRICTLY FORBIDDEN ©

Project No.

Drawn By Iylea Olson, MLA

Checked By

Scale

Sheet

L07



Plant Palette



*Aloysia wrightii*



*Asclepias subulata*



*Dalea bicolor*



*Glandularia goodingii*



*Baileya multiradiata*



*Lycium exsertum*



*Calliandra eriophylla*

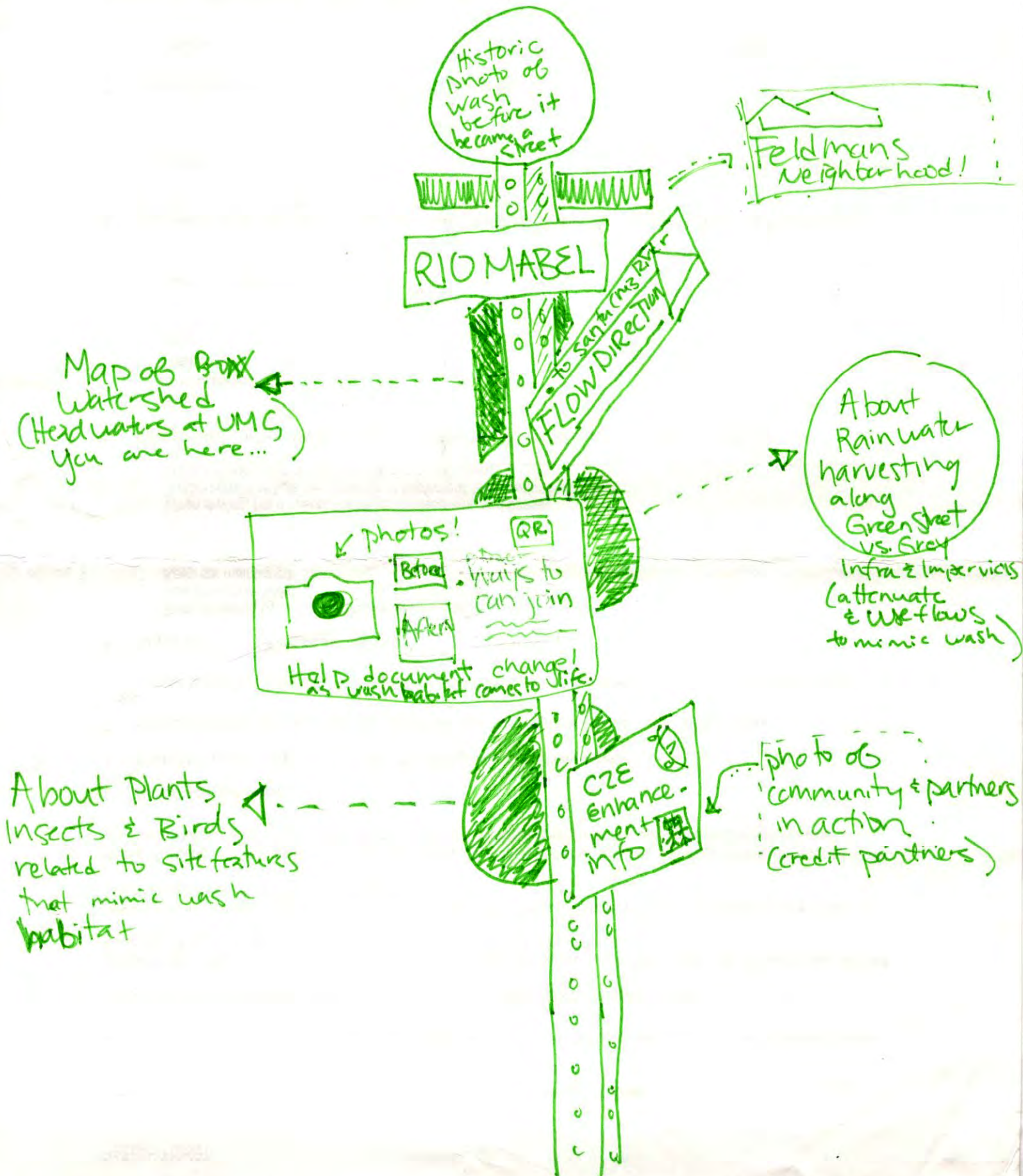


*Falugia paradoxa*



*Muhlenbergia rigens*

# Artistic Educational Sign Concept





## 2015 C2E Grant Application

### Section 5: Project Budget

**10. Complete the budget template below within this document or in the downloadable Excel file. For more instructions, refer to the Grant Info Packet. New in 2015: A 50% match will be required for all grants. Volunteer hours and in-kind services and tools can be counted toward match.**

**Name of fiscal agent:** Feldman's Neighborhood Association      **Email:** sarahtharris@gmail.com      **Phone:** 520-882-4577

Item	Description	C2E Cost	Match
<b>Direct Environmental Benefits</b>			
Water Supplies (conveyance, irrigation systems, etc.)	DRiWATER - 12 months/tree	\$550	\$0
Professional staff time for design & implementation	Iylea Olson, MLA; Landscape Design - 15hrs x \$35/hr = \$525.00 Mead Mier; Project Management - 15hrs x \$22.52/hr = \$337.80	\$262.5	\$262.5 \$337.80
Contractors/labor to do project work	Excavation Curb cuts (5 @ \$200 ea)	\$2500 \$1000	\$0 \$0
Site materials (hardscape & structures)	3"-6" Angular rock	\$1170	\$0
	6"-12" Angular rock	\$300	\$0
	Round river rock (donated by neighbor for smaller, non- curb cut sites)	\$0	\$300
	Mulch 3 yards	\$60	\$0
	Mulch 2 yards (covered by neighborhood)	\$0	\$80
Volunteer Time (valued at @\$22.52/hr; only use for match)	30 people x 12hrs x \$22.52	\$0	\$8107.20
Plants	(100) 1-gal shrubs @\$7	\$700	
	(18) 5-gal trees @\$35/tree (half the cost is covered by Trees for Tucson)	\$0	\$630
	Seeds – native revegetation mix	\$80	
<b>Total</b>		<b>\$6622.50</b>	<b>\$9717.50</b>



## 2015 C2E Grant Application

Ancillary Project Needs (not to exceed 20% of total budget)			
Tools	Builder's level		\$50
Donated hand tools (valued at \$1/hr; only use for match)	\$1 x 20 tools x 8hrs		\$160
Permits	Permit and traffic control \$50 + \$75 +\$75	\$200	
Job + skills training/stipends	UA Hydrocats	\$100	
Workday supplies	Snacks		\$50
	<b>Total</b>	<b>\$300</b>	<b>\$260</b>
Outreach/Education			
Workshop/tour supplies	Ethos - Workshop Instruction = 8hrs x \$64/hr = \$512	\$512	
	<b>Total</b>	<b>\$512</b>	<b>\$0</b>
	<b>Project Total</b>	<b>\$7434.50</b>	<b>\$9977.50</b>
	<b>Is match at least 50% of budget request?</b>	<b>YES</b>	



**Section 6: Project Planning Timeline**

11. Beginning and final tasks are included below. Please elaborate as necessary and include planning and reporting tasks, on-the-ground work, outreach events and maintenance tasks within the scope of this project. A thorough timeline reflects a well-planned project and will be important to the success of the overall project timeline and goals.

	2015		2016		Date Completed
Tasks	July-Sept	Oct-Dec	Jan-March	April - June	
Finalize project design & have approved by C2E	x				
Get final permits	x				
Schedule material deliveries		Mid October			
Curb Cuts + Rough Excavation of Basins		Late October			
Work with Ethos + Hydrocats to refine basin contours + stabilize with rock		Late October			
Work with volunteers to design street art project. Advertise event.		Cyclovia – Nov 1			
Basin Planting		Early November			
Basin Care Training		Early November			



## 2015 C2E Grant Application

<b>Implement Street Painting</b>		Early December			
<b>Design Signage</b>			x		
<b>Install Signage</b>			x		
<b>Submit Progress Reports + Site Photos</b>		x	x	x	
<b>Submit Final Report</b>				x	



**Section 7: C2E Agreement**

If your project is awarded funding, your group agrees to carry out the following tasks...

1. Complete the proposed project within the time period laid out in the Application Timeline and Project Description.
2. Assist C2E with creating and installing an interpretive project sign at the project site; funds for this sign will be provided by Tucson C2E and should not be included in your grant budget.
3. Submit quarterly reports and follow reimbursement procedures as outlined by C2E.
4. Provide site photo updates from a consistent photo point monitoring location.
5. Submit a final reimbursement, site maintenance plan and annual report once all work is completed.
6. Make your application package available for public review.

Signature

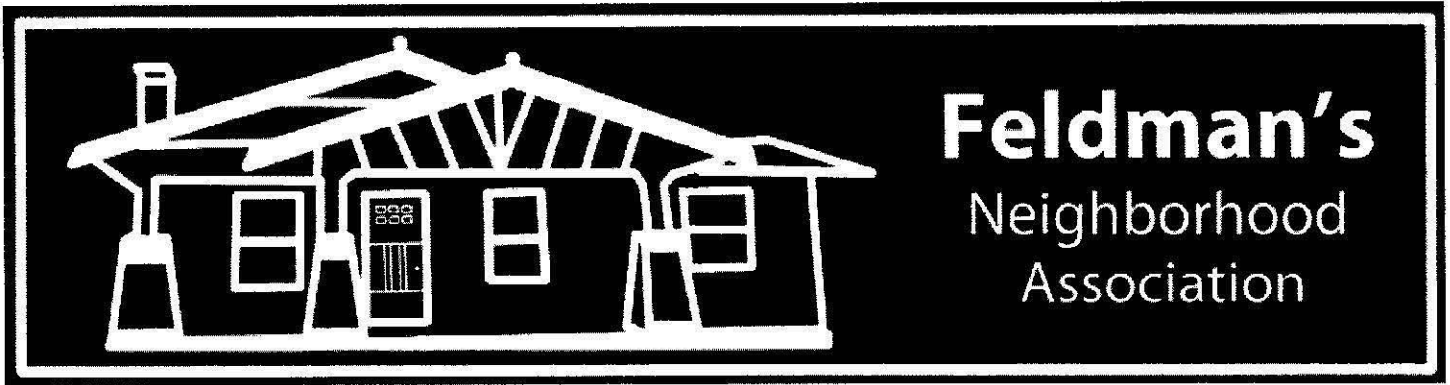
4-13-15

Date

Signature

4-13-15

Date



30 March 2015

Conserve2Enhance

c/o Water Resources Research Center

350 N. Campbell Avenue

Tucson AZ 85719

Re: Feldman's Neighborhood Association 2015 Conserve2Enhance Grant Application

To Conserve2Enhance Tucson:

If awarded, Feldman's Neighborhood Association will commit to the Conserve2Enhance project as defined in the application in Fall 2015 and Spring 2016 and can act as the fiscal agent for the project where needed.

Mead Mier, Feldman's Neighborhood Association Vice President, is the project manager and contact. Mead is certified as a rainwater harvesting practitioner with Watershed Management Group, works in watershed planning and riparian outreach, and has run tree planting campaigns in our neighborhood.

This application is also supported by a great neighborhood green team that includes many active neighbors such as: Iylea Olson, a landscape architect, creating the project site designs; Dylan Huber-Heidorn who founded the UA Hydrocats and helped Feldman's with 4th Avenue rainwater harvesting efforts; and Scout Radler from Trees for Tucson.

Active members of Feldman's Neighborhood Association are interested in offering volunteer time to help plant vegetation and create rainwater harvesting sites, and several are looking forward to caring for rain gardens along 1st Avenue near their homes. The neighborhood Historian Barbara Tellman and long-time resident Diana Lett are active in finding photos and information on the natural history of the wash habitats throughout the neighborhood.

We also enjoy when Cyclovia runs through our neighborhood and found it to be a valuable time to gather the community and engage them in our activities. Cyclovia is a great outreach opportunity for our potential C2E project.

We have an established history in working on greening our streets with Trees for Tucson and have identified 1st Avenue as a priority for enhancement needs with the Living Streets Alliance.

Sincerely,

Diana Lett, Co-President

Sarah Harris, Co-President

Sarah T. Harris – 1217 N. First Avenue, Tucson, AZ 85719 – 520.882.4577

Diana Lett – 1309 N. First Avenue, Tucson, AZ 85719 – 520.977.0870

President@FeldmansAZ.org

Ellen McMahon  
1144 North First Ave

I would love to have my property be included in the Feldman's "100 trees for First Ave project" and will maintain any new plantings. I already have passive rainwater harvesting earth works done as a Watershed Management workshop in my yard and have been a member of C2E for years. I hate to see water the run-off in the street going by my house knowing it could be nourishing my trees and plants. I love the basins on 5th Ave and the new ones on 4th Ave. It would be great to see the streets around my house restored to a wash-like environment with shade trees and understory.

Thank you, Ellen

Please see examples of dedication:

Landscaping my front yard for passive rainwater harvesting was a Green Living Coop Workshop of the Watershed Management Group which they featured in their newsletter (p 3).

Another profile about my environmental work with students:

<http://uanews.org/story/art-professor-creates-new-world-of-awareness>

Also a faculty profile which might help:

<http://studentaffairs.arizona.edu/faculty/mcmahon.php>

And my website below describes my book: Ground|Water: The Art, Design and Science of a Dry River.

[www.ellenmcmahon.com](http://www.ellenmcmahon.com)



## Letter of Support

I am writing to indicate my support for the Feldman's Neighborhood Green Infrastructure Project being submitted to the 2015 C2E Grant Program. The project applicants, Lylea Olson and Mead Mier have informed me of the proposed project, including the goals and impacts to the right-of-way adjacent to my property. I understand that these impacts include:

- Curb cuts along the street
- Water harvesting basins in the right-of-way
- Trees and/or understory vegetation in the basins

I support the proposed work for this project and by signing this letter, I agree that I will participate in the implementation and long-term maintenance of the project and am in favor of the proposed work to be done in the right-of-way in front my property.

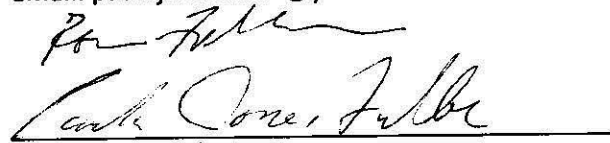
### Contact Information:

Name: Ron Fuller & Paula Jones-Fuller

Address: 1204 N. 1st Ave      City: Tucson      Zip: 85719

Phone: (520) 882-2118

Email: paulajonesfuller@yahoo.com



Signature



Date

I encourage you to include Helen St. between Euclid & 1<sup>st</sup> Ave. in this project. The intersection of 1<sup>st</sup> & Helen regularly floods during a good rain and I would estimate that 90% of the water flows down Helen St. There are at present 6 trees on the easement that we maintain. Three were planted by Trees for Tucson. Curb cuts and catchment basins would greatly benefit their maintenance and growth.

1239 N 1 Ave.  
Tucson, AZ 85719  
March 26, 2015

Conserve 2 Enhance  
Grant Committee

To Whom it May Concern:

I am definitely interested in a tree by the front sidewalk, as well as rainwater harvesting efforts. Of course I would take care of the new tree, as I have taken care of, and continue to care for, other trees in the front and the back. I put in two trees in 2007 in conjunction with Trees for Tucson (one in the front by the sidewalk where everyone in the neighborhood can enjoy it), and two more independently in 2012.

I do a fair amount of walking and do enjoy walking in areas where there are trees. Walking under the trees and seeing them as they grow older makes the summers feel just a little bit less oven-like, which I certainly appreciate. Trees also make an area feel calmer as well as more receptive to people than does a simple sandpit with dwellings.

Living in the desert where water is ever-more important, I am definitely interested in rainwater harvesting issues, and what I can do to conserve and help make Tucson a more livable place. Quite honestly, aside from fairly general knowledge, I am quite ignorant about how to go about this.

Of course I have already made a donation towards the tree that will go in the front. I'm fortunate to live in area that has very wide spaces between the street and the sidewalk on 1st Ave., so that the area can--and should--be used for native trees and/or plants.

Sincerely,

A handwritten signature in black ink that reads "Erika Anne Kreider". The signature is written in a cursive, flowing style.

Erika Anne Kreider



### Letter of Support

I am writing to indicate my support for the Feldman's Neighborhood Green Infrastructure Project being submitted to the 2015 C2E Grant Program. The project applicants, Iylea Olson and Mead Mier have informed me of the proposed project, including the goals and impacts to the right-of-way adjacent to my property. I understand that these impacts include:

- Curb cuts along the street
- Water harvesting basins in the right-of-way
- Trees and/or understory vegetation in the basins

I support the proposed work for this project and by signing this letter, I agree that I will participate in the implementation and long-term maintenance of the project and am in favor of the proposed work to be done in the right-of-way in front my property.

Contact Information:

Name: Martin Munro

Address: 701 E. Mabel Street

City: Tucson Zip: 85719

Phone: 628 8119

Email: lame@delegation.org

Martin A.R. Munro

Signature

April 11<sup>th</sup> 2015

Date



### Letter of Support

I am writing to indicate my support for the Feldman's Neighborhood Green Infrastructure Project being submitted to the 2015 C2E Grant Program. The project applicants, Iylea Olson and Mead Mier have informed me of the proposed project, including the goals and impacts to the right-of-way adjacent to my property. I understand that these impacts include:

- Curb cuts along the street
- Water harvesting basins in the right-of-way
- Trees and/or understory vegetation in the basins

I support the proposed work for this project and by signing this letter, I agree that I will participate in the implementation and long-term maintenance of the project and am in favor of the proposed work to be done in the right-of-way in front my property.

Contact Information:

Name: Cassidy Crane (Pen Name) / Nancy Crane Gadcard (Legal Name)

Address: 1340 N. 1<sup>st</sup> Ave.

City: Tucson Zip: 85719-4001

Phone: (520) 232-3797

Email: NONE

Cassidy Crane  
Signature

4/9/15  
Date



## Letter of Support

I am writing to indicate my support for the Feldman's Neighborhood Project being submitted to the 2015 C2E Grant Program. The project applicant(s), Mead Meier have informed me of the proposed project, including the goals and impacts to my private property. I understand that these impacts to my property include:

- The ability to harvest the stormwater runoff from 1st Avenue that results from heavy rainfalls and would otherwise contribute to street flooding/erosion. St. Luke's Home is beginning the process of water conservation at many levels and this strengthens and furthers our commitment to water conservation efforts that are in the formative stages.
- The improved walkability and enhancement of the neighborhood – encouraging physical activity and camaraderie amongst the neighborhood residents.
- Encouraging the growth of native vegetation.

I support the proposed work for this project and by signing this letter, I agree that I will participate in this project and will allow the proposed work to be done on my property.

### Contact Information:

Name: Marlene Dermody, Community Engagement Coordinator

Address: 615 E Adams St      City: Tucson      Zip: 85705

Phone: 520.207.0805

Email: mdermody@stlukeshometucson.org

Signature

Date

Signature

Date

Sarah T. Harris  
1217 N. 1st Avenue  
Tucson AZ 85719  
520.882.4577  
[sarahtharris@gmail.com](mailto:sarahtharris@gmail.com)

Conserve2Enhance  
c/o Water Resources Research Center  
350 N. Campbell Avenue  
Tucson AZ 85719

Re: Feldman's Neighborhood Association 2015 Conserve2Enhance Grant Application

To Conserve2Enhance Tucson,

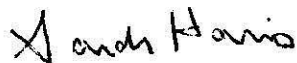
I'm enthusiastically committed to rainwater harvesting and look forward to maintaining basin and berm improvements that will be possibly via Feldman's Neighborhood Association 2015 Conserve2Enhance Grant Application.

After purchasing our home in Feldman's Neighborhood, our first projects included adding a 1200+ gallon tank, swales, and berms to capture rainwater in the front and back yards. This includes a street mesquite tree, native fairy dusters, chuparosa, and native verbena in basins in our front easement. We're thrilled with the possibility of adding curb cores for the tree to catch street runoff, slow the flow downstream, and enhance our wash-like environment.

My husband is a native Arizonan with a background in ecology, soil science, and vegetation restoration. I'm a life-long Arizonan dedicated to desert plants and low water use. We hope our adoption of water harvesting and native plant landscaping inspires our neighbors to do the same.

Thank you for this opportunity.

Sincerely,

A handwritten signature in black ink that reads "Sarah Harris". The signature is written in a cursive, flowing style.

Sarah Harris



### Letter of Support

I am writing to indicate my support for the Feldman's Neighborhood Green Infrastructure Project being submitted to the 2015 C2E Grant Program. The project applicants, Lylea Olson and Mead Mier have informed me of the proposed project, including the goals and impacts to the right-of-way adjacent to my property. I understand that these impacts include:

- Curb cuts along the street
- Water harvesting basins in the right-of-way
- Trees and/or understory vegetation in the basins

I support the proposed work for this project and by signing this letter, I agree that I will participate in the implementation and long-term maintenance of the project and am in favor of the proposed work to be done in the right-of-way in front my property.

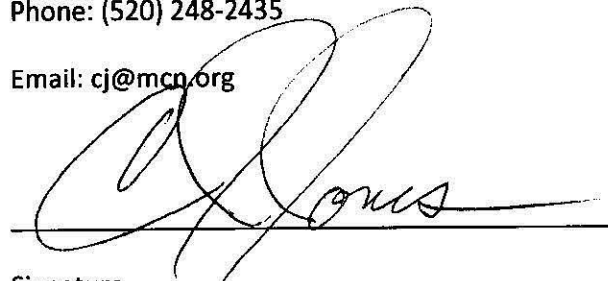
Contact Information:

Name: C.J. Jones

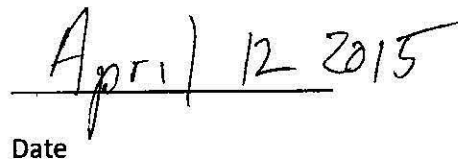
Address: 721 E. Helen St & 1214 N. 1st Ave      City: Tucson      Zip: 85719

Phone: (520) 248-2435

Email: [cj@mcn.org](mailto:cj@mcn.org)



Signature



Date

April 9, 2015

Dear C2E grant committee,

We are excited to become part of the enhancements to the streetscape along First Avenue in the Feldman's Neighborhood. We have lived in this house since the late 1970's and have found ways to cut down on water use in our yard over the years. The possibility of having help to develop a plan for the front part of our lot using rainwater harvesting techniques such as curb cuts, mulching of vegetation, and water collecting basins will be an added bonus!

We will support all efforts for our yard. This type of project not only brings benefits to the homeowners, but also to those that pass through our neighborhood, whether walking, biking, or driving.

Thank you for your commitment and support to make Tucson a "water-wiser" community.

Contact Information: Paul and Annette Felix  
1218 N. 1st. Ave.  
Tucson, AZ 85719  
520-628-1890  
felix1@cox.net



CITY OF  
TUCSON

DEPARTMENT OF  
TRANSPORTATION

April 8, 2015

C2E Community Advisory Board

C/O Ms. Candice Rupprecht

350 N. Campbell Ave

Tucson, Arizona 85719

RE: C2E Grant Feldman Neighborhood

Dear Ms. Rupprecht,

The City of Tucson Department of Transportation has been working with Iylea Olson and Mead Mier in the preparation of their grant proposal. We have met on site and have reviewed their drawing presentation. The Transportation Department is in full support of this project. Please do not hesitate to call if you have any questions.

Respectfully,

A handwritten signature in black ink, reading "Gary D. Wittwer". The signature is fluid and cursive, with the first name "Gary" being the most prominent.

Gary D. Wittwer/TDOT Landscape Section

CC: Carlos de Leon - Deputy Director

Iylea Olson and Mead Mier



P.O. Box 27210  
Tucson, AZ 85726  
(520) 791-3109 office  
(520) 622-7112 fax  
[www.tucsoncleanandbeautiful.org](http://www.tucsoncleanandbeautiful.org)

April 13, 2015

Conserve to Enhance  
c/o Water Resources Research Center  
350 N. Campbell Avenue  
Tucson, AZ 85719

Dear C2E.

I offer my strong support for the Feldman's Neighborhood 2015 C2E Grant proposal. The Green Infrastructure proposal will add 15-20 new street trees within the public right-of-way along First Avenue to be planted in combination with water harvesting features that harness street runoff. Simultaneously Feldman's will offer residents access to Trees for Tucson TEP-sponsored home shade tree program for planting trees on private property. This powerful combination of public and private plantings, demonstration of water harvesting design, and engagement of multiple volunteer groups, substantially improves the health and extent of the urban forest and also educates and engages many individuals in active forest stewardship and watershed health.

I offer Trees for Tucson's partnership and commitment to support individual and community tree planting and ongoing tree stewardship. From prior experience, I can vouch for the expertise, capacity, and experience of Feldman's leaders, Mead Mier, Iylea Olson, and others, to carry this project through to completion.

Similar to Feldman's hugely successful tree-planting campaign along the 4<sup>th</sup> Avenue Bike Boulevard: "50 Trees for Feldman's," TFT can provide advice on tree species to meet city requirements, planting locations for required setbacks, considerations underground and overhead utilities, and help coordinate permits and TDOT approval. Trees for Tucson staff will also provide logistics and leadership for large groups of volunteers.

Feldman's Neighborhood has already shown uncommon leadership and success engaging neighbors to help, soliciting donations, and sparking enthusiasm for community projects. The neighborhood provides highly visible leadership and education to the entire Tucson community about the integral importance of water harvesting to support a healthy and vibrant community forest and long term watershed health.

Trees for Tucson will help disseminate Mead's proposed write-up delineating the steps neighborhoods can take to organize a sizeable street tree planting campaign. Written from the perspective of a community leader, other neighborhoods can greatly benefit and learn from Feldman's example.

Thank you for your consideration.

Sincerely,

A handwritten signature in black ink, appearing to read "Katie Gannon", is written over a light blue rectangular background.

Katie Gannon, MLA  
Director, Trees for Tucson



### Letter of Support

I am writing to indicate my support for the Feldman's Neighborhood Green Infrastructure Project being submitted to the 2015 C2E Grant Program. One of the project applicants, Mead Mier, has informed me of the proposed project. I understand that the goals include curb cuts, rain gardens, and plantings in the right-of-way as well as the stewardship plan which involves a neighborhood commitment to and education about cleaning the sediment traps, removing trash, weeding and tree trimming.

The neighborhood has expressed dedicated interest in adopting 1st Avenue in concurrence with receiving a grant to turning it into a green street.

Feldman's Neighborhood has demonstrated previous commitment's to their adoption of 4th Avenue including regular care for the stormwater harvesting traffic circle at Helen street. Through their reporting to the Adopt a Traffic Circle program, together we have track the impact of their effort. TCB provides motivation for neighborhoods to adopt public spaces and report on efforts by offering a path toward earning neighborhood signage for their adopted space.

Our partners at Trees for Tucson are also committed to providing assistance through the street tree program.

#### Contact Information:

Jean Hickman

Tucson Clean and Beautiful

Phone: 520-837-6834

Email: [Jean.Hickman@tucsonaz.gov](mailto:Jean.Hickman@tucsonaz.gov)



Signature

4/12/15

Date



The University of Arizona HydroCats has had the pleasure of working on water harvesting projects in Feldman's neighborhood on several occasions in cooperation with area residents, Trees for Tucson, the Girl Scouts of America, UA Students for Sustainability, and other groups. HydroCats is a project to train a student team to design, manage, and install water harvesting projects throughout Tucson. We fully support this latest C2E grant application and look forward to working with the Feldman's Neighborhood Association to improve the hydrology of the area and beautify this historic and vital part of Tucson.

The tree planting and water harvesting projects along 4th Avenue in the spring of 2015 were pivotal in the early development of our organization. The projects also opened our eyes to the benefits of working with Tucson's influential neighborhood associations. Feldman's residents exemplify a spirit of cooperation, neighborhood pride, and grassroots community improvement. From the first day that we worked in Feldman's, we were impressed by the willingness of the neighborhood's people to lend their time and effort to make their corner of the world a more welcoming, attractive, and sustainable place, whether it was by giving their sweat and skills during installation or by committing to water trees to ensure the long-term success of the project.

HydroCats would be enthusiastic to dedicate resources to additional projects in Feldman's. Our organization is poised to grow quickly this year, thanks largely to opportunities like this grant. We would have little trouble committing at least 6-10 interns to multiple workdays and design tours this fall. This type of project helps us meet many of our organizational objectives, including community involvement, water harvesting experience and training, and sustainable infrastructure development. The neighborhood's proximity to the University of Arizona, its student population, and its watershed position downstream from University property also contribute to our interest.

We also appreciate the opportunity to learn from local landscape architects and train with Ethos Rainwater Harvesting. We would also benefit from experience with permitting processes and the PAG Green Infrastructure Prioritization and Urban Planning Tool. I would also point out that I am a Feldman's resident, an urban planning student with a particular interest in planning for sustainable environmental quality and watershed health.

A stipend contribution from the grant could go a long way toward helping us to grow HydroCats. A stipend of \$100 would allow us to purchase shirts, banners, or other promotional materials along with tools or other needed materials, and we appreciate the gracious offer from the neighborhood.

Dylan Huber Heidorn  
University of Arizona HydroCats Director



### Letter of Support

I am writing to indicate my support for the Feldman's Neighborhood Green Infrastructure Project being submitted to the 2015 C2E Grant Program regarding the project along First Avenue just north of Speedway. The project applicants, Mead Mier and lylea Olson have informed me of the proposed project including creating a green infrastructure to restore the wash-like qualities of the water course down the street.

I am offering partnership and commitment from Ethos Rainwater Harvesting in the role of earthworks training and rainwater harvesting team leadership for the volunteers. I also have tools available and have offered to assist with transportation of materials and tools in preparation of project days. I feel that community collaboration is a great way to get involved and I look forward to teaching and working with the UA Hydrocats, neighbors, Girl Scouts and other volunteers.

I support the proposed work for this project and by signing this letter I agree that I will participate in the implementation in the Fall of 2015 and/or early Spring of 2016. Feldman's has planned for my involvement for ~8hrs at \$64/hr totaling approximately \$512.

#### Contact Information:

Name: **Lincoln Perino, Ethos Rainwater Harvesting**

Address: PO Box 41146 City: Tucson Zip: 85745

Phone: 520-369-2376

Email: [info@ethosrainwater.com](mailto:info@ethosrainwater.com)

Signature

11Mar2015

Date

Troop 2139  
3002 N Sourdough Place  
Tucson, Arizona 85749  
(520)-760-0311

To Conserve 2 Enhance Tucson,

Our Girl Scout Troop likes to take on special volunteer and help special projects. Out of the many projects that we are asked to volunteer for, the girls felt that the Feldman neighborhood project is what they would like to volunteer for in the fall of 2015 or the spring of 2016. We have about 12 girls in our troop and we may be able to recruit our sister troop 14 who has 6 members.

We would to support their grant application by offering volunteer time to help plant trees and seeds and create rainwater harvesting sites. Our troop enjoys giving back to the community and "making the world a better place". Our troop will volunteer 2-4 hours for this project. If you have any questions, please feel free to contact me at (520)760-0311.

Eve Connick  
Troop 2139 Leader

Girl Scouts at Feldmans Tree Planting Sunday

STACIE COHEN  
[cohen1951@msn.com](mailto:cohen1951@msn.com)

To: Mead Mier

Hi Mead,

Yes of course please include us. We would love to be apart of the program.  
Thank you for thinking of us.

Have a Great Weekend!  
**Stacie Cohen**  
**Troop #467**  
**548-1316**

----- Original Message -----

From: Mead Mier  
To: [cohen1951@msn.com](mailto:cohen1951@msn.com)  
Sent: Thursday, April 2, 2015 8:39 PM  
Subject: Girl Scouts at Feldmans Tree Planting Sunday

Dear Stacie,

Would you like me to include you in our tree planting in the Fall too?  
We are applying for a grant to do trees, rainwater harvesting, flower seeds, and paint the streets to represent where the water flows. We'd love to have your lively spirits and hard working troop back!

Best,  
Mead  
Feldman's Neighborhood Green Team!  
520-260-7395



## THE FELDMAN'S CHRONICLE

December 2013—December 2014

### Officer elections coming in January

#### Note the change of meeting date — January only

Officer elections occur at the annual meeting of the neighborhood association. Due to the New Year holiday, the coming annual meeting of Feldman's Neighborhood Association will be January 8.

Elected positions in the neighborhood association are President, Vice President, Treasurer, Secretary, and Historian.

- President presides at all meetings and acts on behalf of the membership of the Association. He or she implements decisions of the membership.
- Vice President assists the President and assumes the duties of President in her or his absence.
- Secretary records meeting minutes.
- Treasurer provides a financial report for each meeting and keeps the financial records.
- Historian keeps records of neighborhood history and publicity.

All association members are encouraged to nominate, vote, and run for office.

Voting members are persons who reside in or own real property within Feldman's neighborhood, or businesses, agencies, or organizations that rent or own property within Feldman's. A voting member is entitled to one vote.

A person who attends association meetings as a representative of a business, agency, or organization that is a voting member has one vote, whether he or she is a voting member or represents one or more businesses, agencies, or organizations that are also voting members.

Nominations will be accepted at the December and January meetings.

### Your dues support benefits for many

Feldman's Neighborhood Association funds benefit the neighborhood in many ways, including tree planting, events such as Cyclovia and National Night Out, office supplies, even funeral expenses.

Dues are \$15 per year, and larger donations are always welcome. Many members pay dues in January.

Make checks out to Feldman's Neighborhood Association.

If you wish to make an additional donation to the Legal Fund, please note that on the memo line of your check.

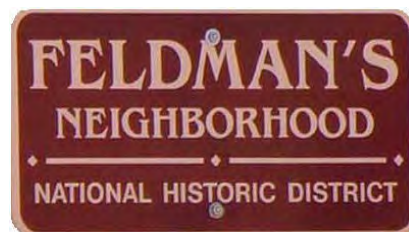
Mail or deliver your dues to:

Paul Felix  
Treasurer

1218 N. 1st Avenue  
Tucson, AZ 85719

### CALENDAR OF NEIGHBORHOOD EVENTS

<b>Thursday January 8</b>	FNA annual meeting & officer elections* 7 p.m.
<b>Thursday February 5</b>	FNA monthly meeting* 7 p.m.
<b>Thursday March 5</b>	FNA monthly meeting* 7 p.m.
<b>Saturday-Sunday March 14-15</b>	Tucson Festival of Books
<b>Thursday April 2</b>	FNA monthly meeting* 7 p.m.
<b>Sunday April 19</b>	Cyclovia Tucson
<b>Thursday May 7</b>	FNA monthly meeting* 7 p.m.
<b>Thursday June 4</b>	FNA monthly meeting* 7 p.m.
<b>July</b>	No meeting until August
	*FNA meeting location: Chapel at St. Luke's Home Southwest corner of 1st Avenue & Lee Street



#### Inside this issue:

<b>Walkability assessment</b>	<b>2</b>
<b>Conserve2Enhance</b>	<b>2</b>
<b>Free trees</b>	<b>3</b>
<b>Cyclovia</b>	<b>3</b>
<b>Clip and save list of neighborhood contacts</b>	<b>4</b>

## THE FELDMAN'S CHRONICLE

# Walk like you mean it

To help Feldman's Neighborhood prioritize walkability improvements in the neighborhood, a Neighborhood Walkability Assessment is planned with guidance from Living Streets Alliance (LSA).

We hope to gain a better understanding of how walkable is Feldman's and how walking conditions can be improved.

First, the Walkability Workshop includes an introduction to walkability and the benefits of walkable neighborhoods, a mapping exercise to identify destinations within walking distance, and walkability assets and challenges.

The workshop will present some street treatments for walkability improvements and give neighbors the opportunity to discuss and identify where such treatments might be beneficial.

At a later date after the workshop, during the Neighborhood Walk & Talk we'll observe what's on the ground that may encourage or discourage walking and discuss improvements that could enhance the walkability of each block.



Feldman's Neighborhood will benefit by:

- Gaining an overall picture of the walking conditions in the neighborhood, while helping us understand the elements that contribute to walkability.
- Receiving a report that highlights the major findings of the walkability assessment that can be useful for future access to grant funding.
- Informing the prioritization of future walkability improvements.
- Getting connected with additional resources and ideas for how to improve walkability.

The mission of the Living Streets Alliance is to "... promote healthy communities by empowering people to transform our streets into vibrant places for walking, bicycling, socializing, and play." LSA is a 501(c)(3) non-profit.

### Save these dates

- Saturday February 21, Walkability Workshop  
10 a.m.—12 p.m.  
Meet in the chapel at St. Luke's Home, at the southwest corner of 1st Avenue & Lee Street.
- Saturday, March 7, Walk and Talk  
10 a.m.—12 p.m.  
Location to be decided at the workshop.

## Complete the circle with Conserve2Enhance

Conserve2Enhance (C2E) is a simple program that helps you put your water conservation efforts to work for the environment, including the environment in our own little neighborhood. C2E is a non-profit group associated with the University of Arizona that links your water conservation to riparian restoration projects.

You can register your Tucson Water account number (ask your landlord for the number if you are renting)

and then use the C2E dashboard to track the results of your water conservation efforts. You can elect to donate some of your financial savings to the restoration fund.

As a neighborhood, Feldman's can apply for C2E grants for rainwater harvesting along streets that serve as our water courses to restore the wash-like qualities of shade, flood attenuation, stormwater quality improvements, and habitat.

When we get more neighbors signed up as conservation participants, it reflects our engagement in grant applica-

tions and improves our chances for obtaining grants. Complete the circle—sign up today.

**<http://conserve2enhance.org/Tucson>**

Let us know if you sign up, have implemented stormwater harvesting in your front yard, and/or if you are interested in being a participant in a future neighborhood rainwater harvesting grant. Contact Mead Mier at [trees@feldmansaz.org](mailto:trees@feldmansaz.org) or phone 260-7395.



**Feldman's adopted traffic circle calms traffic and harvests rain.**

## Free trees for Feldman's

Two programs are providing free street trees and their planting for homes on 4th Avenue and Park Avenue.

"Fifty for Feldman's" was started by former FNA president Dean Knuth to enhance the Feldman's section of the 4th Avenue bike boulevard. Dean and the tree committee raised \$400 to pay for trees from Trees for Tucson. Feldman's is grateful to Buffalo Exchange, County Supervisor Richard Elias, and Casa de los Niños for their generous contributions.

City of Tucson's Park Avenue Enhancement project is creating continuous sidewalks, decomposed granite pathways, and bike lanes along Park Avenue from Speedway to Fort Lowell Road. To enhance the landscape plan, funding to plant trees on designated private properties was added late in 2014.

Trees for the projects are provided by Trees for Tucson, and residents will select from a list of available trees. Planting services will be provided, and residents are asked to water the new trees while they get established. To be eligible, residents will complete the application from Trees for Tucson, which includes providing the Tucson Electric Power account number for their homes. On Park Avenue, sites eligible for free trees have been mapped by Tucson Department of Transportation.

Volunteers are welcome to help with tree planting.

If you wish to receive trees or help with planting, contact Mead Mier at [trees@feldmansaz.org](mailto:trees@feldmansaz.org) or phone 260-7395.

## Feldman's Neighborhood Opens Streets for Cyclovía

Cyclovía is a street festival that closes streets to cars so that they become open to people. During Cyclovía anyone can bike, walk, skate and participate in fun, free activities. Special thanks to Mead Mier and Sue Sanders for organizing the many fun Feldman's activities at Cyclovía November 2!



Sue Sanders helps riders make bike streamers at Cyclovía.

## Staying in touch with FNA

Association members are invited to sign up for the neighborhood web page and listserv. To join, go to: <http://groups.yahoo.com/group/FNA-main>.

On the web page, you can access email conversations, previous newsletters, and helpful files such as the bylaws of the neighborhood association.

(Association members are persons who reside in or own real property within Feldman's neighborhood, or businesses, agencies, or organizations that rent or own property in Feldman's.)

If you do not have Internet access, the neighborhood-sponsored Computer Room at St. Luke's Home is available for your use Monday through Friday, 8 a.m. to 4 p.m. Wireless access to the Internet also is available there.



Jana McConnell's cardboard sculptures at Cyclovía.



Phoenix Mungo provides fiddling fun at Cyclovía.



Office of Integrated Planning  
P.O. Box 27210  
Tucson, AZ 85726-7210

**FELDMAN'S NEIGHBORHOOD ASSOCIATION**  
It's where we all live.

**Disclaimer:**

The City of Tucson, its officers and employees, and all of its offices neither agree nor disagree with the views expressed or implied in this communication or any referenced websites and are not therefore responsible. The distribution requester is solely responsible.

**Feldman's Neighborhood  
is now on Facebook**



**Clip and save this list of neighborhood contacts**

**2014 Neighborhood Contacts**

President & Newsletter Editor	Sarah Harris 882-4577 President@FeldmansAZ.org
Vice President	Lisa Romero VP@FeldmansAZ.org
Treasurer	Paul Felix Treasurer@FeldmansAZ.org
Secretary	Sue Sanders Secretary@FeldmansAZ.org
Historian	Barbara Tellman Historian@FeldmansAZ.org
Neighborhood Preservation	Diana Lett paruni@dakotacom.net

**City Contacts**

Tucson Police Department, non-emergency	791-4467
Tucson Police Department, anonymous reporting	88-CRIME
Tucson Police Department, non-emergency online reporting	<a href="http://www.tucsonaz.gov/police/On_Line_Reporting/on_line_reporting.html">www.tucsonaz.gov/police/ On_Line_Reporting/ on_line_reporting.html</a>
Graffiti Abatement	792-CITY
Code violations and reports of blight	792-CITY
Ward 3 Councilmember Karin Uhlich	791-4711 <a href="mailto:Karin.Uhlich@tucsonaz.gov">Karin.Uhlich@tucsonaz.gov</a>
Ward 6 Councilmember Steve Kozachik	791-4601 <a href="mailto:ward6@tucsonaz.gov">ward6@tucsonaz.gov</a>

Non-emergency issues on City property such as graffiti and pot holes  
report at <http://seeclickfix.com/tucson/report>

If you have a smart phone, you can download the SeeClickFix app to make reports