



C2E Urban Enhancement Grant Workshop

May 2, 2017
Ward 6 Community Room

1

Workshop Overview

- 5:30pm Welcome & Introductions
- 5:40 pm C2E Program Overview
Amy Stabler, Ward 6
Council Aide & C2E Council President
- 6:00 – 6:20pm Previously Funded Projects & Current
Priorities, Candice Rupprecht, Tucson Water
- 6:20 - 6:30pm City of Tucson Neighborhood Stormwater
Projects
- 6:30pm Questions & Consultation

2

“C2E links water conservation efforts to watershed restoration and enhancement, ensuring that your water savings benefit our community.”

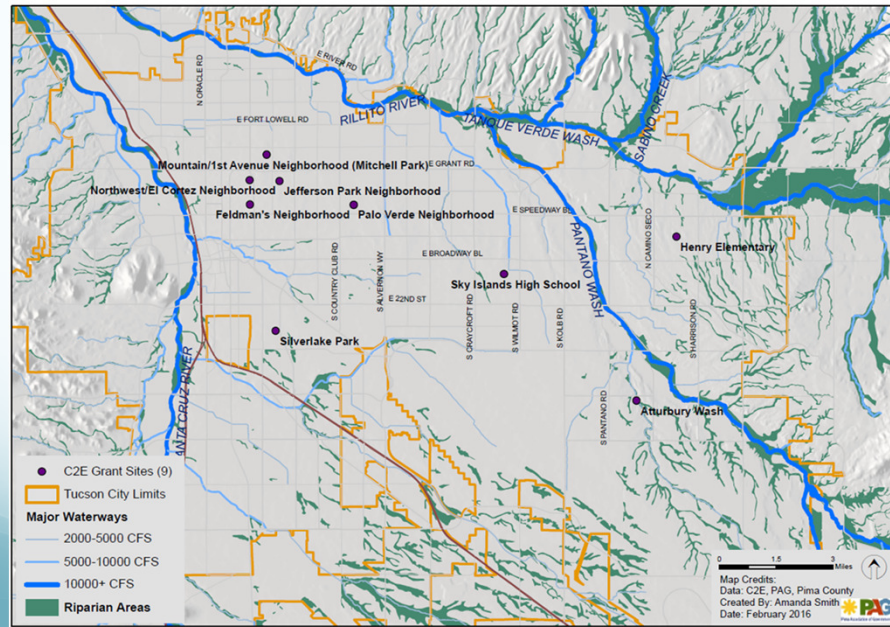
Save Water,
Save Rivers,
Build
Community



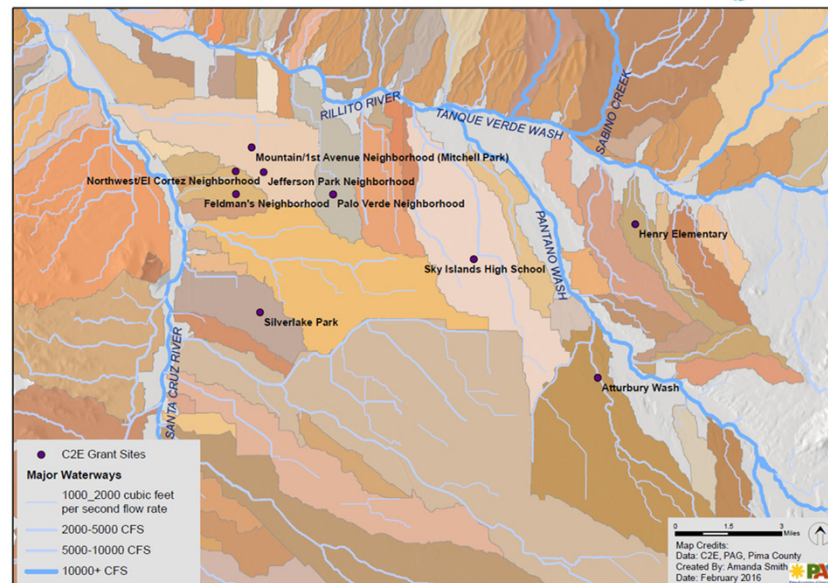
Tucson C2E Impacts

- Since 2011:
 - **11.4 million gallons** of water conserved by participants
 - **\$100,000** in donations (avg. participant donation is ~\$4/month)
 - **\$80,500** in in-kind donations (skill, services & goods)
 - **\$80,000** invested in 9 project sites, with more grant recipients announced each year

Tucson C2E: Project Site Locations



Tucson C2E: Project Site Locations & City Subwatersheds



Who can be a participant?




Homes



Businesses

<https://conserve2enhance.org/Tucson>


[QSEARCH](#)
[About](#)
[Contact](#)
[Log In](#)

[HOW C2E WORKS](#)
[KNOW YOUR WATER](#)
[C2E COMMUNITIES](#)
[CREATE A PROGRAM](#)
[WHAT WE SUPPORT](#)
[JOIN C2E](#)
[DONATE](#)

Home

ARIZONA AUDUBON C2E

ARIZONA WATER SENTINELS

FLAGSTAFF C2E

Additional Resources

Partner Information

RAISE THE RIVER

TUCSON C2E

Grants


Advisory Council

Business Partners

Projects

YAVAPAI C2E

TUCSON C2E



Save Water, Save Rivers, Build Community

Tucson C2E provides funding to improve our urban waterways and wildlife habitats. Conserve water at your home or business, donate your water savings to Tucson C2E, and connect your water conservation to community action. Contact us to learn more or join C2E today to MAKE YOUR DROPS COUNT!

Help green our streets and enhance our washes and waterways! Become a sustaining member of Tucson C2E. You can make a contribution online or by using the "Open Space/Riparian" box on your Tucson Water or Pima County Wastewater utility bill. If 5% of customers in the Tucson Water service area join C2E, they would conserve an estimated 350,000,000 gallons of water annually and provide more than \$500,000 for restoration projects each year!

Tucson C2E, the first C2E program in the nation, was founded in 2011 through a collaboration between the University of Arizona Water Resources Research Center, Tucson Water (our local water utility), and the nonprofits Sonoran Institute and Watershed Management Group. The program is now overseen by the Tucson C2E Advisory Council.

Here are just a few ways to get involved with Tucson C2E today:

\$100,978 funding to date

11,376,396 gal. total water savings for program to date

270 online participants

22,102 gal. avg. savings per online participant

[JOIN PROGRAM >](#)

[CONTACT COMMUNITY LEADER >](#)

[DONATE >](#)

Home > User account

USER ACCOUNT

Create new account Log in Request new password

Username *

E-mail address *

First Name * Last Name *

City * State * Zip *

Number of people

Year built

Utility *

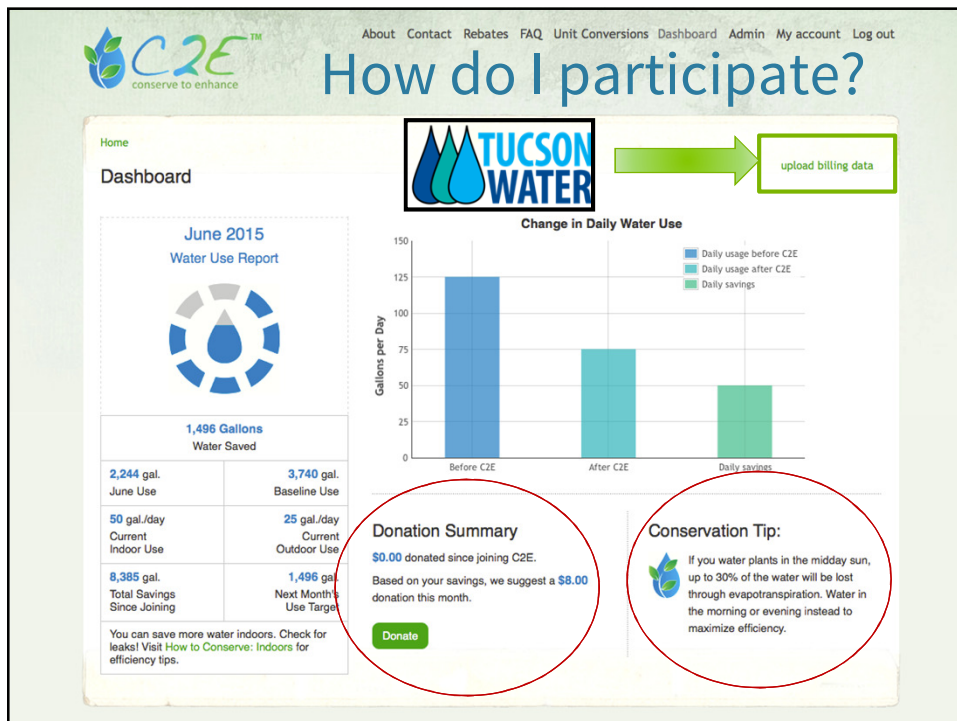
How did you hear about us

If you selected other, please specify here

Customer account number

Allow water use data access

☒ Yes, C2E may securely receive my water use data from my utility to automatically update my Water Use Dashboard information.



UTILITY SERVICES STATEMENT

Bill Date: 03/22/2016 Service Period: 02/17/16 to 03/17/16 Due Date: 04/11/2016 Last Bill: \$55 Payments (Credits): \$0.00 Adjustments: \$0.00

JOHN DOE
ACCOUNT NUMBER: 1234567-123456
1234 E STREET
TUCSON, AZ 85705-1234

AMOUNT DUE: \$55

SEWER \$55 Phone: 520-791-3242
WATER \$55 Phone: 520-791-3242
ENVIRON. SVC \$55 Phone: 520-791-3171

PAST DUE BALANCE \$55 Please pay immediately to avoid additional fees.
MISCELLANEOUS \$55 Breakdown of charges on invoice

USAGE ALERT: Your meter reflected higher than normal usage for this billing cycle; please contact 520-791-3242 if you have any concerns regarding your water use.

Variable Message About the Bill Will Display Here

Please test on perforations before heating and return bottom portion with your payment.

Optional Open Space/Riparian Donation

☐ \$2.00
☐ \$5.00
☐ \$10.00
☐ \$_____ Please

In 2015, the checkbox received \$10,700 from 817 individual donors.

This becomes our annual budget.

WHEN YOU SAVE WATER YOU SAVE OUR RIVERS

Take many! Pass them out!

Santa Cruz River Photo by: Terry Moody

LEARN HOW
SIGN UP AT
conserve2enhance.org
AND MAKE YOUR DROPS COUNT

C2E connects conservation to community action. Your donations, based on water savings, provide funding to enhance our urban waterways and wildlife habitats.

info@conserve2enhance.org

How C2E Works

SAVE WATER

Join Tucson C2E! Sign up, learn conservation tips, and track your water savings with the C2E Water Use Dashboard at conserve2enhance.org. Tucson Water customers can automatically link their water use data to their C2E account.

DONATE

Commit to donating part or all of your water bill savings to local C2E projects. Donate using the Open Space/Riparian check box on your monthly Tucson Water utility bill or through the online C2E Dashboard.

BECOME A LEADER

Apply to receive a Tucson C2E Grant. To date, \$60,000 has been invested in projects that enhance local washes, reduce flooding, and increase wildlife habitat. New projects are funded annually.

conserve2enhance.org/Tucson

<https://conserve2enhance.org/program/grants>

C2E
conserve to enhance


HOW C2E WORKS KNOW YOUR WATER C2E COMMUNITIES CREATE A PROGRAM WHAT WE SUPPORT JOIN C2E DONATE

Home

ARIZONA AUDUBON C2E
ARIZONA WATER SENTINELS
FLAGSTAFF C2E
Additional Resources
Partner Information
RAISE THE RIVER
TUCSON C2E
Grants
Advisory Council
Business Partners
Projects
YAVAPAI C2E

www.conserve2enhance.org/Tucson

GRANTS



THE 2017 C2E GRANT CYCLE IS NOW ACCEPTING APPLICATIONS!

The Tucson C2E Program awards grants annually to local organizations working to improve our urban waterways and riparian habitats throughout Tucson. These projects include both habitat enhancement and restoration projects that directly benefit our community's natural and riparian areas.

During the grant cycle, C2E will prioritize projects that benefit important riparian areas, emphasize partnerships and community access to green space, have high levels of C2E participation, and feature strong long-term stewardship commitments. In addition, areas with low urban tree canopy cover and high surface temperature will receive special consideration.

2017 Grant Applications due May 31, 2017

APPLICATION MATERIALS

- C2E 2017 Project Application (fillable word doc)
- C2E 2017 Grant Information Sheet (pdf)
- C2E Letter of Support Template (word doc)

ADDITIONAL REFERENCE MATERIALS

- P&G Green Infrastructure GIS Map
- Feldman's Neighborhood Rain Garden Care Guide
- Feldman's Neighborhood Rain Garden Rock Stabilization Guide
- Basin Plant Guide by Iylea Olson
- Western Pima County Approved Plant List

EXAMPLE APPLICATIONS

Applications have changed slightly for 2017, but these applications provide good examples of successfully funded projects.

13

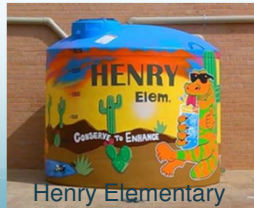
2017 Funding Information

What C2E™ funds

- Green Infrastructure: Urban waterway & wash improvements in natural drainages, parks, or public spaces that have direct connection to designated wash and/or riparian area
- Habitat restoration & preservation along/near washes or upland drainages
- Community access, partnerships & high levels of C2E participation



Mitchell Park



Henry Elementary



Atturbury Wash

15

C2E Will NOT Fund...

- The expansion of irrigation from potable water sources
- Hardscape (e.g., concrete structures, retaining walls, impervious stormwater conveyance)
- Improvements that are entirely contained on private property, unless the private property is located within a wash or waterway and the applicant can demonstrate that the improvements will generate public benefit in excess of the funding request

16

C2E Unlikely to Fund...

- Streetside Green Infrastructure Projects including curbcuts, curb cores & right-of-way basins.
 - Other funding sources available including Tucson Water rebate program & City of Tucson Stormwater Projects

17

Grant requirements & 2017 changes

- Location:
 - Tucson Water service area and/or Pima Co. Wastewater service area (Customers in project area must receive Utility Services Statement)
 - Demonstrated connection to a urban wash or riparian area
- Budget:
 - Project budget cannot exceed \$10,000
 - 50% match required
 - Budget narrative that describes expenses
- Community Support:
 - Affected landowners must submit letters of support (private & public property)

18

2017 Grant Timeline

- Step 1 Applications due May 31st, 2017
- Review & Selection of projects for Step 2 in June 2017
- Step 2 Applications will be due for Finalists in July
- Final Selections made in July and new projects can begin in August 2017

19

Step 1 Questions

1. In broad terms discuss your project, noting what problems you are trying to address and what benefits your project will create.
2. Please attach a project site map with aerial view. Label key features like streets, washes and proposed project features. (examples to use: Google, Pima Maps, PAG Green Infrastructure Map)
3. In the space below describe the location of the project site. Is there any functional connection to washes, waterways, and riparian areas? Who is the property owner? Are you aware of any permits that would be needed? If so, please discuss your plan to address permits.
4. How do you plan on establishing vegetation on your project site? Discuss your methodology and sources. Discuss any anticipated water savings that will be made possible by the project. (Examples include utilizing a source of water that is currently not used, removing existing irrigation, etc.)
5. How will the finished project be maintained after C2E funding has ended? Please discuss your plans for long-term maintenance of the site. Please address litter clean-up, weeding, trimming vegetation, watering new plants, maintaining and repairing earthworks and infrastructure after storms, and long-term control of invasive species (e.g., buffelgrass, Bermuda grass, undesirable volunteer trees).
6. What makes this project unique? How does this project relate to this year's funding goal on page 1 (**projects that are physically adjacent to washes OR create significant habitat and green space**)?
7. What is your estimated project budget?

20

Project Plan Examples

21

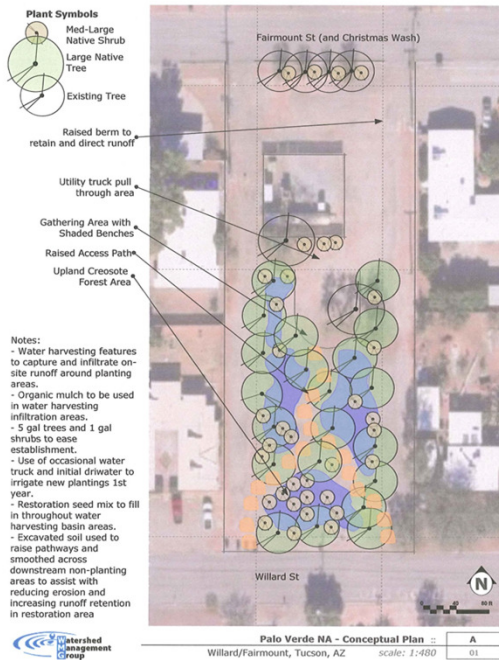


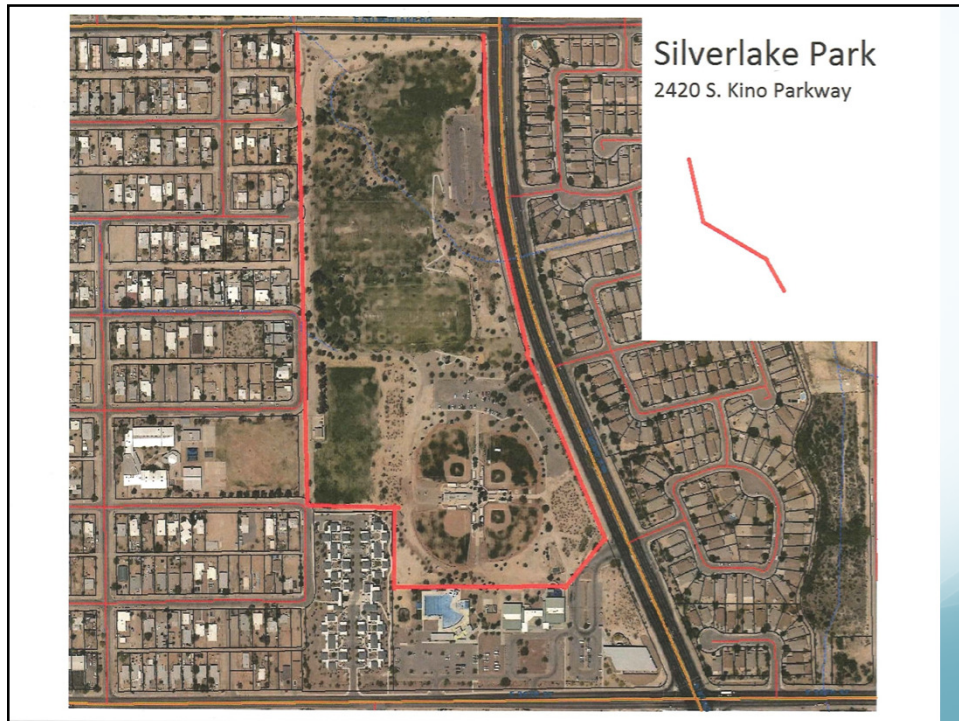
**Palo Verde Neighborhood
- 2014**



Palo Verde Neighborhood, 1.17 square-mile, with the proposed PVNA C2E B-54 Water Well Beautification Project designated in yellow. The neighborhood is bordered by Speedway Boulevard to the south, Grant Road to the north, Country Club Road to the west, and Alvernon Way to the east. Blue designates the Christmas Wash, and un-named wash east of, which feeds into Christmas Wash at Pima Street.

Green Streets Projects - Purple: WMG/Neighborhood Leadership Project/ProNeighborhoods projects in place, Turquoise: WMG/Ward 6/PVNA - set to install.







2012 Atturbury Wash Project

- 1 acre restoration & demonstration site - \$12,000 awarded
 - 50+ native trees & shrubs planted to connect habitat w/ wash
 - 5 basins dug & raised path created to capture runoff and create walking path



Atturbury Wash before (left) and after (right) Tucson C2E enhancement efforts.
Photo Credit: Kendall Kroesen, Tucson Audubon Society

2013 C2E Projects

1. Henry Elementary WINS! – \$8,250 awarded

Wash Improvement and Neighborhood Sustainability submitted by Henry Elementary included basins, plantings & a cistern



2013 C2E Projects

2. 1st Ave./Seneca Greening and Beautification Project - \$4,175 awarded

Streetside basin along 1st Ave submitted by the Northwest and El Cortez Neighborhoods



2013 C2E Projects

3. Mitchell Park Wildlife Habitat & Green Infrastructure Project - \$5,956 awarded

curb cores & 2 basins within a neighborhood triangle park; submitted by the Mountain/1st Ave Neighborhood



2014 C2E Projects

1. Vine Ave. Green Corridor Project - \$1,900 awarded

2 streetside basins constructed by the Jefferson Park Neighborhood Association



Jefferson Park Before & After



2014 C2E Projects



2. Silverlake Park Urban Habitat Restoration - \$5,800 awarded
urban wash enhancement & park habitat improvement submitted by Tucson Audubon Society



2014 C2E Projects

3. Palo Verde Neighborhood B-54 Wellsite Beautification Project - \$5,940 awarded

Urban park enhancement with several large basins collecting stormwater runoff; completed by the Palo Verde Neighborhood



36

2015 C2E Projects

1. Feldman's Neighborhood - \$7,000 awarded

First Ave Green Street Wash with UA Hydrocats and Trees for Tucson
Goals: mitigate "urban wash" aka street flooding & enhance walkability



2015 C2E Projects

2. Sky Island High School - \$5,000 awarded

Earthworks along school entrance with the Arid Lands Management Class Watershed Restoration Project to mitigate flooding & beautify



**Changemaker High School - \$7,000
awarded**

Swan Wash Restoration Project

2016 C2E Project



C2E Project Monitoring & Maintenance

Visit a site and get involved!



On Behalf of C2E,
Thank You!

C2E Grant Deadline: Wednesday, May 31st, 2017

Submit your completed application packet via
email to Tucson@Conserve2Enhance.org



41

City of Tucson Stormwater Projects

- Goals:
 - increase capacity & skills for Green Infrastructure (GI)
 - improve aesthetics & minor flooding in neighborhoods
 - more models for neighborhood GI
- Projects:
 - up to \$45,000 per project or per Ward; letter of support required from Ward & other project partners
 - TCB will select contractors & manage projects & permits
 - maintenance & monitoring required
 - Blue Stake required before TCB consult visit

42

[illegible]

Budget Template

Item	Quantity	C2E Cost	Match
Materials			
Water Supplies (conveyance, irrigation systems, acquisition of water)	12 months/tree	\$550.00	\$ -
Site materials (hardscape & structures)	3"-6" Angular Rock	\$1,170.00	\$ -
	6"-12" Angular rock	\$300.00	\$ -
	round river rock		\$ 300.00
	mulch 3 yrds	\$60.00	\$ -
	mulch 2 yrds		\$ 80.00
Plants (estimate type(s) and quantity)	100 1-gal shrubs @ \$7	\$700.00	
	18 5-gal trees @35/tree, rest covered by TFT	\$0.00	\$ 630.00
	seeds - native veg remix (donated by AZNPS)	\$ 80.00	
Category Total:		\$2,860.00	\$1,010
Equipment			
Tools	builder's level		\$ 50.00
Donated hand tools (valued at \$1/hr, only use for match)	\$1 x 20 tools x 8rs		\$ 160.00
Category Total:		\$	\$210
Services			
Professional staff time for design & implementation (Olson)	15 hrs x \$35/hr = \$525.00	\$262.50	\$ 262.50
Professional staff time for design & implementation (Mier)	15 hrs x \$22.52/hr = \$337.80		\$ 337.80
Contractors/labor to do project work	Excavation	\$2,500.00	\$ -
Volunteer Time (only use for match)			\$ 8,107.20
Category Total:		\$2762.50	\$8707.50
Incidental Items			
Permits	permit & traffic control (\$50 + \$50 + \$75), waived by DOT	\$ 200.00	
Job and skills training/stipends, etc.	UA Hydrocats; Ethos training = 8 hrs x \$64/hr	\$100.00	
Workday supplies	snacks		\$ 50.00
Workshop/tour supplies	Ethos training = 8 hrs x \$64/hr = \$512	\$512.00	
Category Total:		\$812.00	\$260.00
Project Total:		\$7,434.50	\$9,977.50
	Is match at least 50% of budget request?		YES!

Budget

Materials:

- Submit the cost estimates for the type and quantity of each material that you included in your budget (e.g., rocks, mulch, plants, water, DriWater, etc.). Explain how each cost estimate was determined, and include the intended source of the material and price quotes for items when possible.
 - Example:* Our design requires three velvet mesquites and two blue palo verde trees for planting in three basins. Trees will be obtained from Trees for Tucson.
 - (5 trees) x (\$15 per tree) = \$75 C2E cost

Services:

- Submit the cost estimates of all contracted work (curb cuts/cores, excavation, etc.), consultative work (e.g., expert assistance with project planning, design, and installation), and services (e.g., cost of right-of-way or excavation permits, workshop/educational/training fees, etc.) in this category.
- Volunteer labor rates:
 - Unskilled labor (digging, planting, weeding, etc.) – \$12 per hour for adults, \$7 per hour for children
 - Professional services (e.g., landscape architect, arborist, engineer, educator, project coordinator) – \$35 per hour or as otherwise documented (do not include overhead in quotes for donated labor).